

For Research Use Only

GSR Recombinant antibody

Catalog Number: 84480-2-RR



Basic Information

Catalog Number:

84480-2-RR

Size:

1000 μ g/ml

Source:

Rabbit

Isotype:

IgG

Immunogen Catalog Number:

AG13080

GenBank Accession Number:

BC069244

GeneID (NCBI):

2936

UNIPROT ID:

P00390

Full Name:

glutathione reductase

Calculated MW:

522 aa, 56 kDa

Observed MW:

52-55 kDa

Purification Method:

Protein A purification

CloneNo.:

241934D2

Recommended Dilutions:

WB 1:2000-1:10000

IF/ICC 1:250-1:1000

Applications

Tested Applications:

WB, IF/ICC, FC (Intra), ELISA

Species Specificity:

human, mouse

Positive Controls:

WB : A549 cells, Jurkat cells, HeLa cells, mouse testis tissue

IF/ICC : HeLa cells,

Background Information

GSR (Glutathione reductase) is also named as GLUR, GRD1 and belongs to the class-I pyridine nucleotide-disulfide oxidoreductase family. It was first found in a black American variant red cell GSR characterized by greater electrophoretic mobility and enzyme activity per unit of hemoglobin than the normal. This protein maintains high levels of reduced glutathione in the cytosol. It has 5 isoforms produced by alternative splicing and alternative initiation.

Storage

Storage:

Store at -20°C . Stable for one year after shipment.

Storage Buffer:

PBS with 0.02% sodium azide and 50% glycerol pH 7.3.

Aliquoting is unnecessary for -20°C storage

For technical support and original validation data for this product please contact:

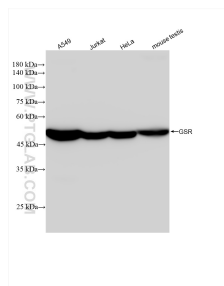
T: 4006900926

E: Proteintech-CN@ptglab.com

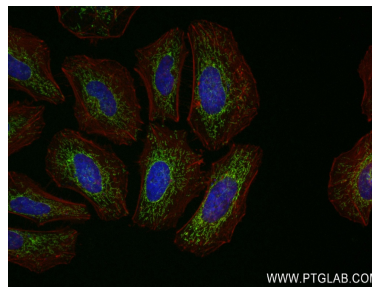
W: ptgcn.com

This product is exclusively available under Proteintech Group brand and is not available to purchase from any other manufacturer.

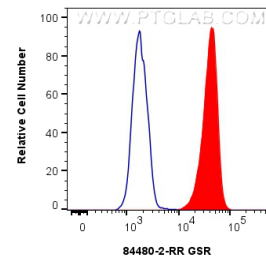
Selected Validation Data



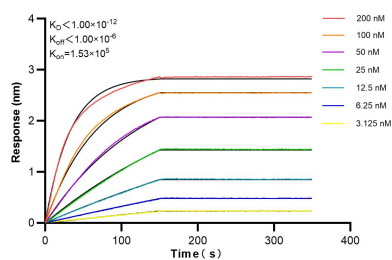
Various lysates were subjected to SDS PAGE followed by western blot with 84480-2-RR (GSR antibody) at dilution of 1:5000 incubated at room temperature for 1.5 hours.



Immunofluorescent analysis of (4% PFA) fixed HeLa cells using GSR antibody (84480-2-RR, Clone: 241934D2) at dilution of 1:500 and CoraLite® 488-Conjugated Goat Anti-Rabbit IgG(H+L) (SA00013-2), CL594-Phalloidin (red).



1x10⁶ HeLa cells were intracellularly stained with 0.25 ug GSR Recombinant antibody (84480-2-RR, Clone: 241934D2) and CoraLite® 488-Conjugated Goat Anti-Rabbit IgG(H+L) (SA00013-2)(red), or 0.25 ug Rabbit IgG Isotype Control RecAb (98136-1-RR, Clone: 240953C9) (blue). Cells were fixed with 4% PFA and permeabilized with Flow Cytometry Perm Buffer (PF00011-C).



Biolayer interferometry (BLI) kinetic assays of 84480-2-RR against Human GSR were performed. The affinity constant is below 1 pM.