

For Research Use Only

FKBP11 Recombinant antibody

Catalog Number: 84478-5-RR



Basic Information

Catalog Number: 84478-5-RR	GenBank Accession Number: BC027973	Purification Method: Protein A purification
Size: 1000 ug/ml	GeneID (NCBI): 51303	CloneNo.: 241912G12
Source: Rabbit	UNIPROT ID: Q9NYL4	Recommended Dilutions: WB 1:5000-1:50000 IF/ICC 1:125-1:500
Isotype: IgG	Full Name: FK506 binding protein 11, 19 kDa	
Immunogen Catalog Number: AG11368	Calculated MW: 201 aa, 22 kDa Observed MW: 24 kDa	

Applications

Tested Applications: WB, IF/ICC, ELISA	Positive Controls:
Species Specificity: human, mouse, rat	WB : mouse stomach tissue, mouse pancreas tissue, rat stomach tissue, mouse liver tissue IF/ICC : Raji cells,

Background Information

FKBP11 (FK506 binding protein 11, also named FKBP19) was first described as predominantly expressed in secretory tissues including the pancreas and recent studies have suggested a role in beta cell survival under conditions of ER stress (PMID: 35456020). In addition, FKBP11 appears to play a role in osteoblasts and bone formation where it has been observed to associate with interferon-inducible transmembrane protein 5 (IFITM5) (PMID: 24058703).

Storage

Storage:
Store at -20°C. Stable for one year after shipment.
Storage Buffer:
PBS with 0.02% sodium azide and 50% glycerol pH 7.3.
Aliquoting is unnecessary for -20°C storage

For technical support and original validation data for this product please contact:

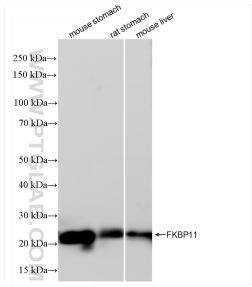
T: 4006900926

E: Proteintech-CN@ptglab.com

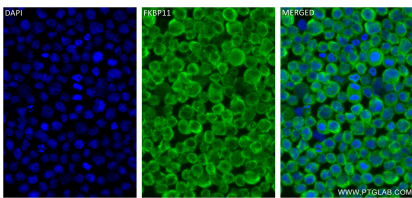
W: ptgcn.com

This product is exclusively available under Proteintech Group brand and is not available to purchase from any other manufacturer.

Selected Validation Data



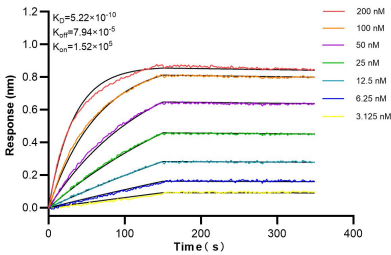
Various lysates were subjected to SDS PAGE followed by western blot with 84478-5-RR (FKBP11 antibody) at dilution of 1:10000 incubated at room temperature for 1.5 hours.



Immunofluorescent analysis of (4% PFA) fixed Raji cells using FKBP11 antibody (84478-5-RR, Clone: 241912G12) at dilution of 1:250 and CoraLite® 488-Conjugated Goat Anti-Rabbit IgG(H+L) (SA00013-2).



mouse pancreas tissue were subjected to SDS PAGE followed by western blot with 84478-5-RR (FKBP11 antibody) at dilution of 1:10000 incubated at room temperature for 1.5 hours.



Biolayer interferometry (BLI) kinetic assays of 84478-5-RR against Human FKBP11 were performed. The affinity constant is 0.522 nM.