

For Research Use Only

FKBP11 Recombinant antibody, PBS Only (Detector)

Catalog Number: 84478-3-PBS



Basic Information

Catalog Number:

84478-3-PBS

Size:

1 mg/ml

Source:

Rabbit

Isotype:

IgG

Immunogen Catalog Number:

AG11368

GenBank Accession Number:

BC027973

GeneID (NCBI):

51303

UNIPROT ID:

Q9NYL4

Full Name:

FK506 binding protein 11, 19 kDa

Calculated MW:

201 aa, 22 kDa

Purification Method:

Protein A purification

CloneNo.:

241912G5

Applications

Tested Applications:

Cytometric bead array, Sandwich ELISA, Indirect ELISA, Sample test

Species Specificity:

human

Background Information

Storage

Storage:

Store at -80°C.

The product is shipped with ice packs. Upon receipt, store it immediately at -80°C

Storage Buffer:

PBS Only

For technical support and original validation data for this product please contact:

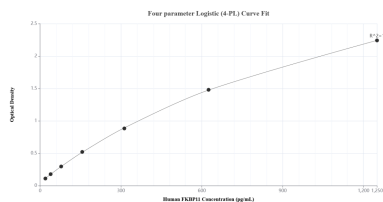
T: 4006900926

E: Proteintech-CN@ptglab.com

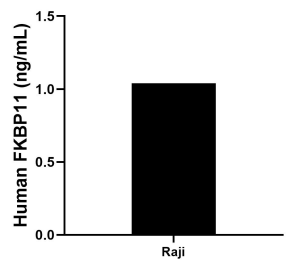
W: ptgcn.com

This product is exclusively available under Proteintech Group brand and is not available to purchase from any other manufacturer.

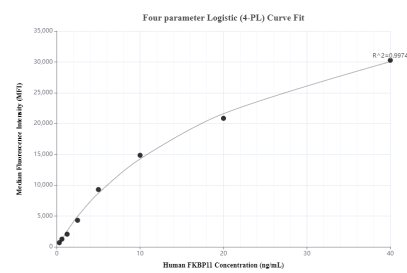
Selected Validation Data



Sandwich ELISA standard curve of MP01342-2, Human FKBP11 Recombinant Matched Antibody Pair - PBS only. 84478-4-PBS was coated to a plate as the capture antibody and incubated with serial dilutions of standard Ag11368. 84478-3-PBS was HRP conjugated as the detection antibody. Range: 19.5-1250 pg/mL.



The mean FKBP11 concentration was determined to be 1.0 ng/mL in Raji cell extract based on a 1.2 mg/mL extract load.



Cytometric bead array standard curve of MP01342-2, FKBP11 Recombinant Matched Antibody Pair, PBS Only. Capture antibody: 84478-4-PBS. Detection antibody: 84478-3-PBS. Standard: Ag11368. Range: 0.313-40 ng/mL.