

For Research Use Only

# Integrin beta-6 Recombinant antibody, PBS Only (Detector)

Catalog Number: 84475-4-PBS



## Basic Information

Catalog Number:

84475-4-PBS

Size:

1 mg/ml

Source:

Rabbit

Isotype:

IgG

Immunogen Catalog Number:

AG29002

GenBank Accession Number:

BC121178

GeneID (NCBI):

3694

UNIPROT ID:

P18564

Full Name:

integrin, beta 6

Calculated MW:

788 aa, 86 kDa

Purification Method:

Protein A purification

CloneNo.:

241877F2

## Applications

Tested Applications:

Cytometric bead array, Sandwich ELISA, Indirect ELISA,  
Sample test

Species Specificity:

human

## Background Information

### Storage

Storage:

Store at -80°C.

**The product is shipped with ice packs. Upon receipt, store it immediately at -80°C**

Storage Buffer:

PBS Only

For technical support and original validation data for this product please contact:

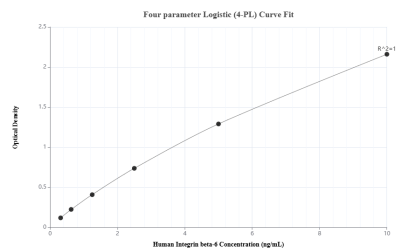
T: 4006900926

E: Proteintech-CN@ptglab.com

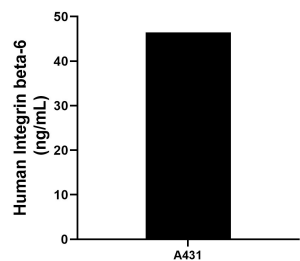
W: ptgcn.com

**This product is exclusively available under Proteintech Group brand and is not available to purchase from any other manufacturer.**

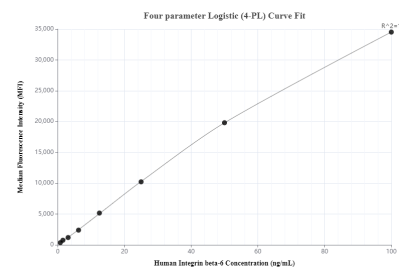
## Selected Validation Data



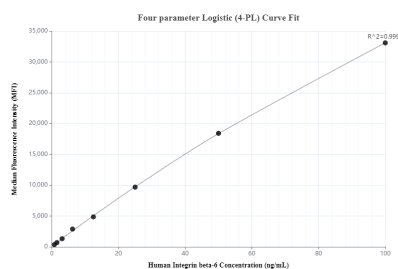
Sandwich ELISA standard curve of MP01331-4, Human Integrin beta-6 Recombinant Matched Antibody Pair - PBS only. 84475-5-PBS was coated to a plate as the capture antibody and incubated with serial dilutions of standard Ag29002. 84475-4-PBS was HRP conjugated as the detection antibody. Range: 0.313-10 ng/mL



The mean Integrin beta-6 concentration was determined to be 46.45 ng/mL in A431 cell extract based on a 1.3 mg/mL extract load.



Cytometric bead array standard curve of MP01331-1, Integrin beta-6 Recombinant Matched Antibody Pair, PBS Only. Capture antibody: 84475-2-PBS. Detection antibody: 84475-4-PBS. Standard: Ag29002. Range: 0.781-100 ng/mL



Cytometric bead array standard curve of MP01331-3, Integrin beta-6 Recombinant Matched Antibody Pair, PBS Only. Capture antibody: 84475-1-PBS. Detection antibody: 84475-4-PBS. Standard: Ag29002. Range: 0.781-100 ng/mL