

For Research Use Only

# Mouse CD107b / LAMP2 Recombinant antibody, PBS Only (Capture)

Catalog Number: 84474-3-PBS



## Basic Information

Catalog Number:

84474-3-PBS

Size:

1 mg/ml

Source:

Rabbit

Isotype:

IgG

GenBank Accession Number:

NM\_001017959.2

GeneID (NCBI):

16784

UNIPROT ID:

P17047-1

Full Name:

lysosomal-associated membrane protein 2

Calculated MW:

46 kDa

Observed MW:

90 kDa

Purification Method:

Protein A purification

CloneNo.:

241893G7

## Applications

Tested Applications:

WB, IHC, IF/ICC, Cytometric bead array, Indirect ELISA

Species Specificity:

mouse

## Background Information

Lysosomal-associated membrane protein 2 (LAMP2, synonyms: LAMPB, CD107b) is a member of a family of membrane glycoproteins. This glycoprotein provides selectins with carbohydrate ligands. LAMP2 may play a role in tumor cell metastasis. It may also function in the protection, maintenance, and adhesion of the lysosome. Prior to posttranslational modification, LAMP2 is a ~45 kDa polypeptide. Mature, functional LAMP2 is extensively glycosylated with a variety of different N-linked and O-linked oligosaccharides.

## Storage

Storage:

Store at -80°C.

The product is shipped with ice packs. Upon receipt, store it immediately at -80°C

Storage Buffer:

PBS Only

For technical support and original validation data for this product please contact:

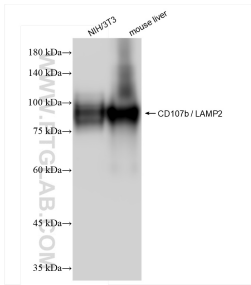
T: 4006900926

E: [Proteintech-CN@ptglab.com](mailto:Proteintech-CN@ptglab.com)

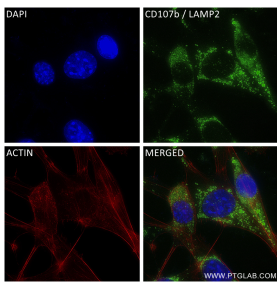
W: [ptgcn.com](http://ptgcn.com)

This product is exclusively available under Proteintech Group brand and is not available to purchase from any other manufacturer.

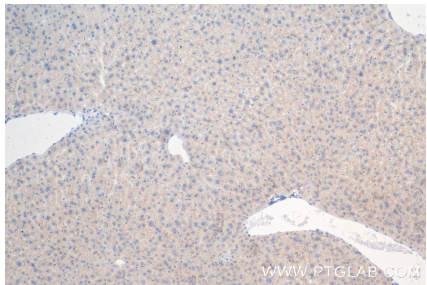
## Selected Validation Data



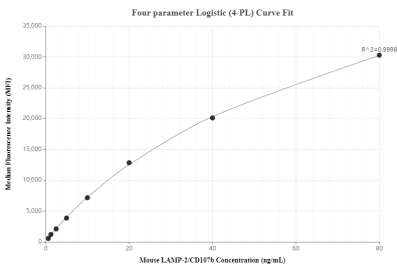
Various lysates were subjected to SDS PAGE followed by western blot with 84474-3-RR (CD107b / LAMP2 antibody) at dilution of 1:5000 incubated at room temperature for 1.5 hours. This data was developed using the same antibody clone with 84474-3-PBS in a different storage buffer formulation.



Immunofluorescent analysis of (4% PFA) fixed NIH/3T3 cells using CD107b / LAMP2 antibody (84474-3-RR, Clone: 241893G7) at dilution of 1:400 and CoraLite®488-Conjugated Goat Anti-Rabbit IgG(H+L) (SA00013-2), CL594-Phalloidin (red). This data was developed using the same antibody clone with 84474-3-PBS in a different storage buffer formulation.



Immunohistochemical analysis of paraffin-embedded mouse liver tissue slide using 84474-3-RR (CD107b / LAMP2 antibody) at dilution of 1:200 (under 10x lens). Heat mediated antigen retrieval with Tris-EDTA buffer (pH 9.0). This data was developed using the same antibody clone with 84474-3-PBS in a different storage buffer formulation.



Cytometric bead array standard curve of MP01356-2, MOUSE CD107b / LAMP2 Recombinant Matched Antibody Pair, PBS Only. Capture antibody: 84474-3-PBS. Detection antibody: 84474-4-PBS. Standard: Eg2029. Range: 0.625-80 ng/mL.