

For Research Use Only

Mouse Neutrophil elastase Recombinant antibody, PBS Only (Capture/Detector)

Catalog Number: 84473-4-PBS



Basic Information

Catalog Number:

84473-4-PBS

Size:

1 mg/ml

Source:

Rabbit

Isotype:

IgG

GenBank Accession Number:

NM_015779.2

GeneID (NCBI):

50701

UNIPROT ID:

Q3UP87

Full Name:

elastase 2, neutrophil

Calculated MW:

29KD

Purification Method:

Protein A purification

CloneNo.:

241842E7

Applications

Tested Applications:

Cytometric bead array, Sandwich ELISA, Indirect ELISA,
Sample test

Species Specificity:

mouse

Background Information

Storage

Storage:

Store at -80°C.

The product is shipped with ice packs. Upon receipt, store it immediately at -80°C

Storage Buffer:

PBS Only

For technical support and original validation data for this product please contact:

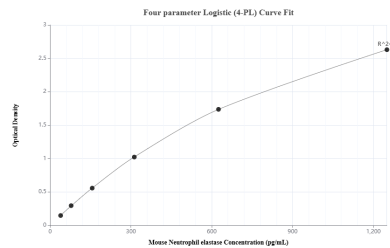
T: 4006900926

E: Proteintech-CN@ptglab.com

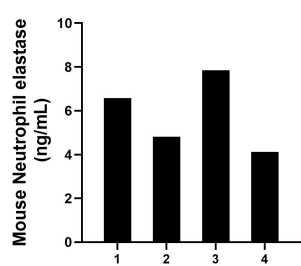
W: ptgcn.com

This product is exclusively available under Proteintech Group brand and is not available to purchase from any other manufacturer.

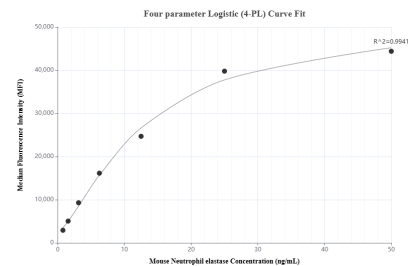
Selected Validation Data



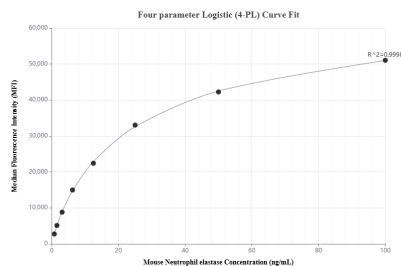
Sandwich ELISA standard curve of MP01355-4, Mouse Neutrophil elastase Recombinant Matched Antibody Pair - PBS only. 84473-4-PBS was coated to a plate as the capture antibody and incubated with serial dilutions of standard Eg2126. 84473-5-PBS was HRP conjugated as the detection antibody. Range: 39.1-1250 pg/mL



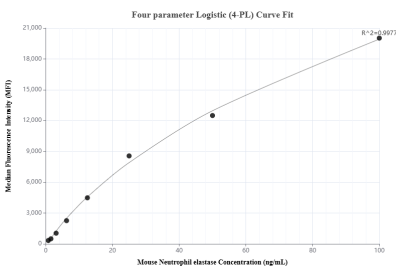
Serum of four mice was measured. The mouse Neutrophil elastase concentration of detected samples was determined to be 5.84 ng/mL with a range of 4.12 - 7.85 ng/mL.



Cytometric bead array standard curve of MP01355-1, MOUSE Neutrophil elastase Recombinant Matched Antibody Pair, PBS Only. Capture antibody: 84473-2-PBS. Detection antibody: 84473-4-PBS. Standard: Eg2126. Range: 0.781-50 ng/mL



Cytometric bead array standard curve of MP01355-2, MOUSE Neutrophil elastase Recombinant Matched Antibody Pair, PBS Only. Capture antibody: 84473-1-PBS. Detection antibody: 84473-4-PBS. Standard: Eg2126. Range: 0.781-100 ng/mL



Cytometric bead array standard curve of MP01355-3, MOUSE Neutrophil elastase Recombinant Matched Antibody Pair, PBS Only. Capture antibody: 84473-4-PBS. Detection antibody: 84473-3-PBS. Standard: Eg2126. Range: 0.781-100 ng/mL