

For Research Use Only

# IGFBP3 Recombinant antibody, PBS Only (Detector)

Catalog Number: 84470-1-PBS



## Basic Information

Catalog Number:

84470-1-PBS

Size:

1 mg/ml

Source:

Rabbit

Isotype:

IgG

GenBank Accession Number:

NM\_000598.5

GeneID (NCBI):

3486

UNIPROT ID:

P17936-1

Full Name:

insulin-like growth factor binding protein 3

Calculated MW:

32 kDa

Purification Method:

Protein A purification

CloneNo.:

241723A6

## Applications

Tested Applications:

Cytometric bead array, Sandwich ELISA, Indirect ELISA, Sample test

Species Specificity:

human

## Background Information

### Storage

Storage:

Store at -80°C.

The product is shipped with ice packs. Upon receipt, store it immediately at -80°C

Storage Buffer:

PBS Only

For technical support and original validation data for this product please contact:

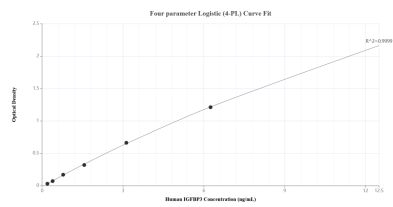
T: 4006900926

E: [Proteintech-CN@ptglab.com](mailto:Proteintech-CN@ptglab.com)

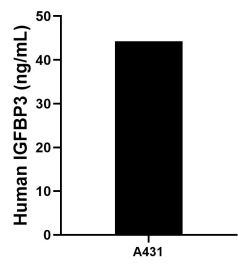
W: [ptgcn.com](http://ptgcn.com)

This product is exclusively available under Proteintech Group brand and is not available to purchase from any other manufacturer.

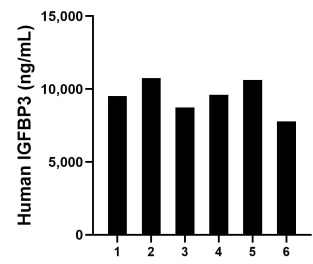
Selected Validation Data



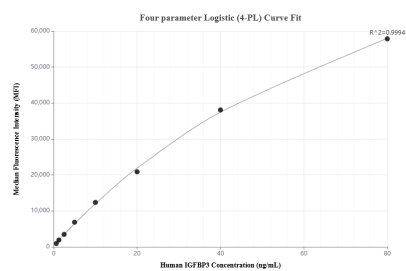
Sandwich ELISA standard curve of MP01352-2, Human IGFBP3 Recombinant Matched Antibody Pair - PBS only. 84470-3-PBS was coated to a plate as the capture antibody and incubated with serial dilutions of standard Eg1827. 84470-1-PBS was HRP conjugated as the detection antibody. Range: 0.195-12.5 ng/mL.



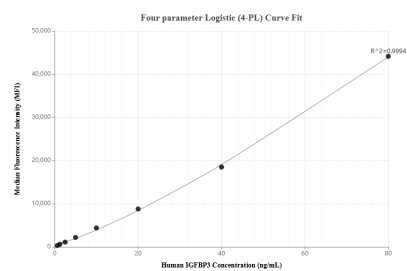
A431 were cultured in DMEM supplemented with 10% fetal bovine serum, 2.5 mM L-glutamine, 100 U/mL penicillin, and 100  $\mu$ g/mL streptomycin sulfate. An aliquot of the cell culture supernate was removed, assayed for human IGFBP3, and measured 44.22 ng/mL.



Serum of six individual healthy human donors was measured. The IGFBP3 concentration of detected samples was determined to be 9,505.05 ng/mL with a range of 7,790.22-10,751.16 ng/mL.



Cytometric bead array standard curve of MP01352-1, IGFBP3 Recombinant Matched Antibody Pair, PBS Only. Capture antibody: 84470-2-PBS. Detection antibody: 84470-1-PBS. Standard: Eg1827. Range: 0.625-80 ng/mL.



Cytometric bead array standard curve of MP01352-2, IGFBP3 Recombinant Matched Antibody Pair, PBS Only. Capture antibody: 84470-3-PBS. Detection antibody: 84470-1-PBS. Standard: Eg1827. Range: 0.625-80 ng/mL.