

For Research Use Only

Mouse Tie-2 Recombinant antibody, PBS Only (Detector)

Catalog Number: 84469-1-PBS



Basic Information

Catalog Number:

84469-1-PBS

Size:

1 mg/ml

Source:

Rabbit

Isotype:

IgG

GenBank Accession Number:

NM_001290549.1

GeneID (NCBI):

21687

UNIPROT ID:

Q02858

Full Name:

endothelial-specific receptor tyrosine
kinase

Calculated MW:

126kDa

Purification Method:

Protein A purification

CloneNo.:

241753C1

Applications

Tested Applications:

Cytometric bead array, Sandwich ELISA, Indirect ELISA,
Sample test

Species Specificity:

mouse

Background Information

Storage

Storage:

Store at -80°C.

The product is shipped with ice packs. Upon receipt, store it immediately at -80°C

Storage Buffer:

PBS Only

For technical support and original validation data for this product please contact:

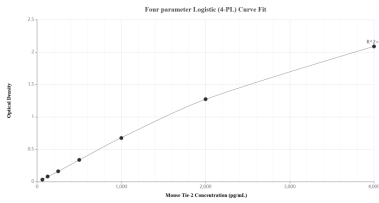
T: 4006900926

E: Proteintech-CN@ptglab.com

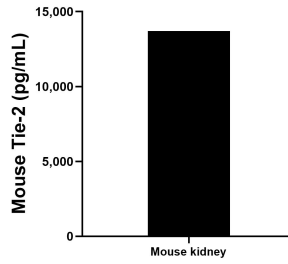
W: ptgcn.com

This product is exclusively available under Proteintech Group brand and is not available to purchase from any other manufacturer.

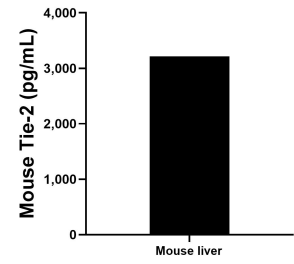
Selected Validation Data



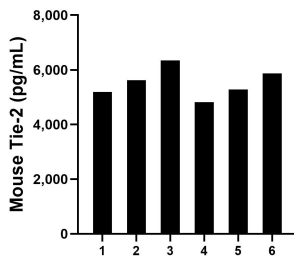
Sandwich ELISA standard curve of MP01351-2, Mouse Tie-2 Recombinant Matched Antibody Pair - PBS only. 84469-4-PBS was coated to a plate as the capture antibody and incubated with serial dilutions of standard Eg1514. 84469-1-PBS was HRP conjugated as the detection antibody. Range: 125-4000 pg/mL



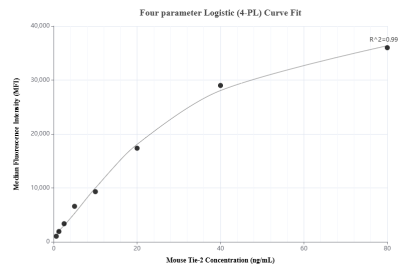
One mouse kidney was cultured in RPMI 1640 supplemented with 10% fetal bovine serum, 50 μ M β -mercaptoethanol, 2 mM L-glutamine, and 100 μ g/mL of streptomycin sulfate. An aliquot of the cell culture supernatant was removed, assayed for mouse Tie-2 and measured 13,696.0 pg/mL



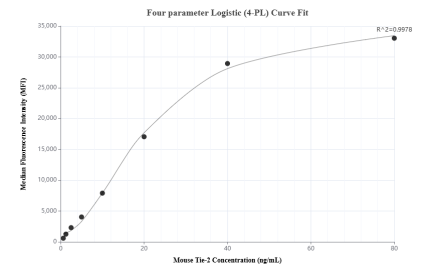
The mean Tie-2 concentration was determined to be 3214.5 pg/mL in mouse liver tissue homogenate based on a 3.3 mg/mL extract load.



Serum of six mice was measured. The Tie-2 concentration of detected samples was determined to be 5520.9 pg/mL with a range of 4813.2-6347.4 pg/mL



Cytometric bead array standard curve of MP01351-1, MOUSE Tie-2 Recombinant Matched Antibody Pair, PBS Only. Capture antibody: 84469-2-PBS. Detection antibody: 84469-1-PBS. Standard: Eg1514. Range: 0.625-80 ng/mL



Cytometric bead array standard curve of MP01351-2, MOUSE Tie-2 Recombinant Matched Antibody Pair, PBS Only. Capture antibody: 84469-4-PBS. Detection antibody: 84469-1-PBS. Standard: Eg1514. Range: 0.625-80 ng/mL