

For Research Use Only

Integrin alpha-5 Recombinant antibody, PBS Only (Capture)

Catalog Number: 84468-4-PBS



Basic Information

Catalog Number:

84468-4-PBS

Size:

1 mg/ml

Source:

Rabbit

Isotype:

IgG

GenBank Accession Number:

BC008786

GeneID (NCBI):

3678

UNIPROT ID:

P08648

Full Name:

integrin, alpha 5 (fibronectin receptor,
alpha polypeptide)

Calculated MW:

115 kDa

Observed MW:

140 kDa

Purification Method:

Protein A purification

CloneNo.:

241685A3

Applications

Tested Applications:

WB, IF/ICC, Cytometric bead array, Indirect ELISA

Species Specificity:

human, mouse

Background Information

Integrins are cell adhesion receptors that are heterodimers composed of non-covalently associated alpha and beta subunits. Integrin alpha 5 (ITGA5), belongs to the integrin alpha chain family, primarily binds to Integrin beta 1 (ITGB1) to form an $\alpha 5 \beta 1$ heterodimer (PMID: 33711961). Integrin $\alpha 5 \beta 1$ is a specific receptor of fibronectin through its arginine-glycine-aspartic acid (RGD) binding site (PMID: 19608542). Integrin $\alpha 5 \beta 1$ plays roles in cell adhesion, migration and matrix formation, and has emerged as an essential mediator in many human carcinomas (PMID: 33408483).

Storage

Storage:

Store at -80°C.

The product is shipped with ice packs. Upon receipt, store it immediately at -80°C

Storage Buffer:

PBS Only

For technical support and original validation data for this product please contact:

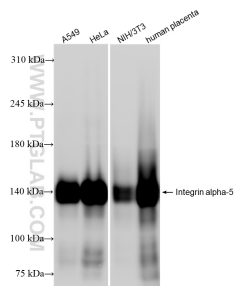
T: 4006900926

E: Proteintech-CN@ptglab.com

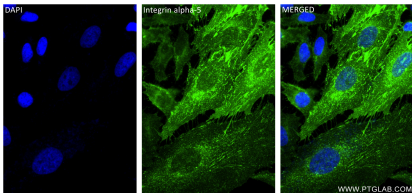
W: ptgcn.com

This product is exclusively available under Proteintech Group brand and is not available to purchase from any other manufacturer.

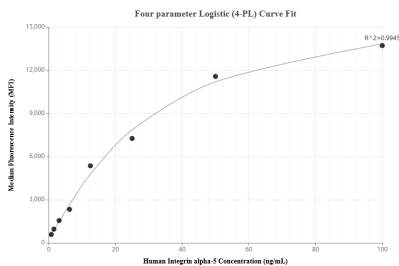
Selected Validation Data



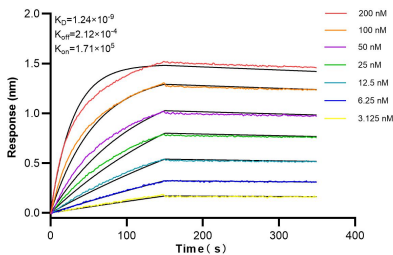
Various lysates were subjected to SDS PAGE followed by western blot with 84468-4-RR (Integrin alpha-5 antibody) at dilution of 1:5000 incubated at room temperature for 1.5 hours. This data was developed using the same antibody clone with 84468-4-PBS in a different storage buffer formulation.



Immunofluorescent analysis of (4% PFA) fixed HeLa cells using Integrin alpha-5 antibody (84468-4-RR, Clone: 241685A3) at dilution of 1:400 and CoraLite® 488-Conjugated Goat Anti-Rabbit IgG(H+L) (SA00013-2). This data was developed using the same antibody clone with 84468-4-PBS in a different storage buffer formulation.



Cytometric bead array standard curve of MP01350-2, Integrin alpha-5 Recombinant Matched Antibody Pair, PBS Only. Capture antibody: 84468-4-PBS. Detection antibody: 84468-2-PBS. Standard: RP00012. Range: 0.781-100 ng/mL.



Biolayer interferometry (BLI) kinetic assays of 84468-4-RR against Human Integrin alpha-5 were performed. The affinity constant is 1.24 nM.