

For Research Use Only

# INSR/CD220 Recombinant antibody, PBS Only (Capture/Detector)

Catalog Number: 84467-2-PBS



## Basic Information

Catalog Number:

84467-2-PBS

Concentration:

1 mg/ml

Source:

Rabbit

Isotype:

IgG

GenBank Accession Number:

BC117172

GeneID (NCBI):

3643

UNIPROT ID:

P06213

Full Name:

INSR

Observed MW:

95 kDa

Purification Method:

Protein A purification

CloneNo.:

241687H7

## Applications

Tested Applications:

WB, Cytometric bead array, Sandwich ELISA, Indirect ELISA, Sample test

Species Specificity:

human

## Background Information

The biological effects of INSR are mediated by a membrane-spanning cell surface receptor that has been shown to consist of disulfide-linked alpha-subunits (135 kDa) and beta-subunits (95 kDa) that are cleaved products of a common precursor. The binding of INSR to the receptor extracellular domain results in intracellular activation of a tyrosine-specific kinase activity and the generation of signals that determine the cellular response (PMID: 2369896).

## Storage

Storage:

Store at -80°C.

**The product is shipped with ice packs. Upon receipt, store it immediately at -80°C**

Storage Buffer:

PBS only, pH7.3

For technical support and original validation data for this product please contact:

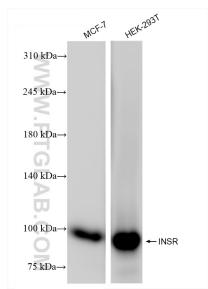
T: 4006900926

E: [Proteintech-CN@ptglab.com](mailto:Proteintech-CN@ptglab.com)

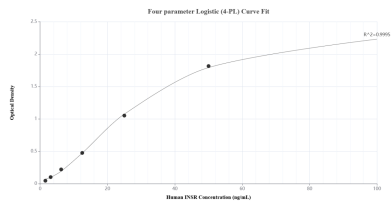
W: [ptgcn.com](http://ptgcn.com)

**This product is exclusively available under Proteintech Group brand and is not available to purchase from any other manufacturer.**

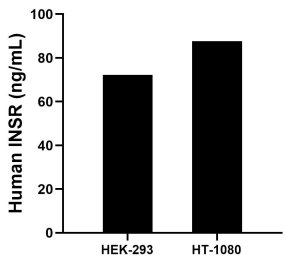
## Selected Validation Data



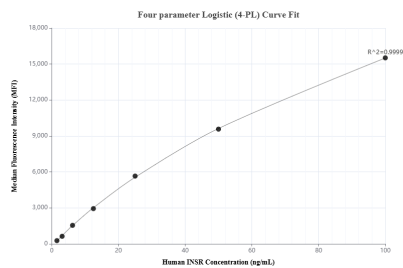
MCF-7 cells were subjected to SDS PAGE followed by western blot with 84467-2-RR (INSR antibody) at dilution of 1:1000 incubated at room temperature for 1.5 hours. This data was developed using the same antibody clone with 84467-2-PBS in a different storage buffer formulation.



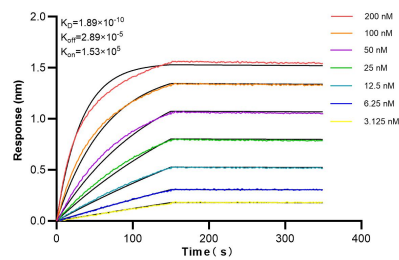
Sandwich ELISA standard curve of MP01349-2, Human INSR Recombinant Matched Antibody Pair - PBS only. 84467-1-PBS was coated to a plate as the capture antibody and incubated with serial dilutions of standard RP00007. 84467-2-PBS was HRP conjugated as the detection antibody. Range: 1.56-100 ng/mL.



The mean INSR concentration was determined to be 72.33 ng/mL in HEK-293 cell extract based on a 1.50 mg/mL extract load and 87.72 ng/mL in HT-1080 cell extract based on a 2.50 mg/mL extract load.



Cytometric bead array standard curve of MP01349-1, INSR Recombinant Matched Antibody Pair, PBS Only. Capture antibody: 84467-2-PBS. Detection antibody: 84467-1-PBS. Standard: RP00007. Range: 1.56-100 ng/mL.



Biolayer interferometry (BLI) kinetic assays of 84467-2-RR against Human INSR were performed. The affinity constant is 0.189 nM.