

For Research Use Only

# Integrin alpha 6 Recombinant antibody

Catalog Number: 84463-2-RR



## Basic Information

Catalog Number:

84463-2-RR

Size:

1000  $\mu$ g/ml

Source:

Rabbit

Isotype:

IgG

GenBank Accession Number:

BC136456

GeneID (NCBI):

3655

UNIPROT ID:

P23229

Full Name:

integrin, alpha 6

Calculated MW:

1073 aa, 119 kDa

Purification Method:

Protein A purification

CloneNo.:

241703E3

Recommended Dilutions:

IF/ICC 1:200-1:800

## Applications

Tested Applications:

IF/ICC, ELISA

Species Specificity:

human

Positive Controls:

IF/ICC : A431 cells,

## Background Information

### Storage

Storage:

Store at -20°C. Stable for one year after shipment.

Storage Buffer:

PBS with 0.02% sodium azide and 50% glycerol pH 7.3.

Aliquoting is unnecessary for -20°C storage

For technical support and original validation data for this product please contact:

T: 4006900926

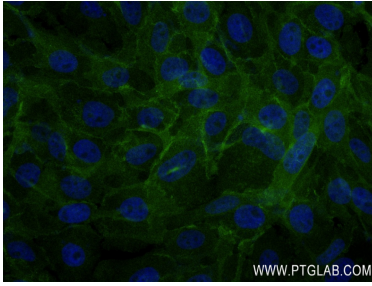
E: [Proteintech-CN@ptglab.com](mailto:Proteintech-CN@ptglab.com)

W: [ptgcn.com](http://ptgcn.com)

This product is exclusively available under Proteintech Group brand and is not available to purchase from any other manufacturer.

---

## Selected Validation Data



Immunofluorescent analysis of (4% PFA) fixed A431 cells using Integrin alpha-6 antibody (84463-2-RR, Clone: 241703E3 ) at dilution of 1:400 and CoraLite®488-Conjugated Goat Anti-Rabbit IgG(H+L) (SA00013-2).