

For Research Use Only

# OLFML1 Recombinant antibody, PBS Only

Catalog Number: 84454-1-PBS



## Basic Information

Catalog Number:

84454-1-PBS

Size:

1 mg/ml

Source:

Rabbit

Isotype:

IgG

Immunogen Catalog Number:

AG35125

GenBank Accession Number:

BC092488

GeneID (NCBI):

283298

UNIPROT ID:

Q6UWY5

Full Name:

olfactomedin-like 1

Calculated MW:

402 aa, 46 kDa

Observed MW:

60 kDa

Purification Method:

Protein A purification

CloneNo.:

241561G7

## Applications

Tested Applications:

WB, Indirect ELISA

Species Specificity:

human, mouse, rat

## Background Information

OLFML1 (Olfactomedin-like protein 1) is a novel member of human OLF protein family with an olfactamine domain (143-397 aa) in its C-terminus. OLFML1 exhibits the promotion of cell proliferation, along with the increase of percentage of S phase cells. OLFML1 is considered a secreted glycoprotein that enhances cell cycle progression in human cancer cell lines in vitro (PMID: 30266405). OLFML1 contains three potential N-glycosylation sites (residues 66, 138 and 183) and could be modified by the N-glycosylation (PMID: 18708057).

## Storage

Storage:

Store at -80°C.

The product is shipped with ice packs. Upon receipt, store it immediately at -80°C

Storage Buffer:

PBS Only

For technical support and original validation data for this product please contact:

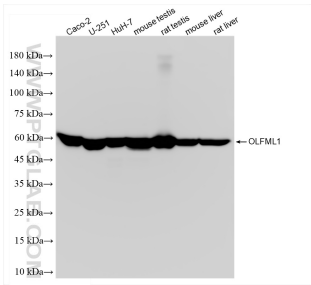
T: 4006900926

E: Proteintech-CN@ptglab.com

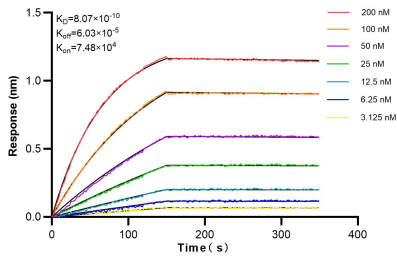
W: ptgcn.com

This product is exclusively available under Proteintech Group brand and is not available to purchase from any other manufacturer.

## Selected Validation Data



Various lysates were subjected to SDS PAGE followed by western blot with 84454-1-RR (OLFML1 antibody) at dilution of 1:10000 incubated at room temperature for 1.5 hours. This data was developed using the same antibody clone with 84454-1-PBS in a different storage buffer formulation.



Biolayer interferometry (BLI) kinetic assays of 84454-1-RR against Human OLFML1 were performed. The affinity constant is 0.807 nM.