

For Research Use Only

# Exportin 4 Recombinant antibody, PBS Only

Catalog Number: 84449-1-PBS



## Basic Information

Catalog Number:	84449-1-PBS	GenBank Accession Number:	BC113571	Purification Method:	Protein A purification
Concentration:	1 mg/ml	GeneID (NCBI):	64328	CloneNo.:	241443A5
Source:	Rabbit	UNIPROT ID:	Q9C0E2		
Isotype:	IgG	Full Name:	exportin 4		
Immunogen Catalog Number:	AG21845	Calculated MW:	1151 aa, 130 kDa		
		Observed MW:	130 kDa		

## Applications

**Tested Applications:**  
WB, IF/ICC, FC (Intra), Indirect ELISA

**Species Specificity:**  
human, mouse

## Background Information

exportin 4 (XPO4) maps to chromosome 13q and belongs to the importin  $\beta$  family which acts as a bidirectional nuclear transport receptor. Decreased XPO4 expression has been shown to associate with hepatocellular carcinoma. A genome-wide copy number variation (CNV) association study in a small cohort of Malaysian subjects identified a CNV in XPO4 to be correlated with the progression of metabolic (dysfunction) associated fatty liver disease (MAFLD). (PMID: 34388518)

## Storage

**Storage:**  
Store at -80°C.

**The product is shipped with ice packs. Upon receipt, store it immediately at -80°C**

**Storage Buffer:**  
PBS only, pH7.3

For technical support and original validation data for this product please contact:

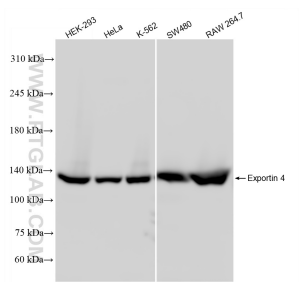
T: 4006900926

E: [Proteintech-CN@ptglab.com](mailto:Proteintech-CN@ptglab.com)

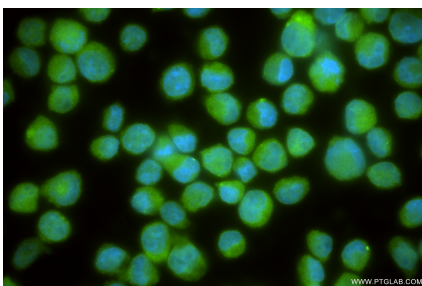
W: [ptgcn.com](http://ptgcn.com)

**This product is exclusively available under Proteintech Group brand and is not available to purchase from any other manufacturer.**

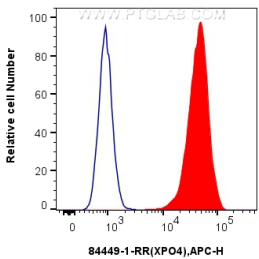
Selected Validation Data



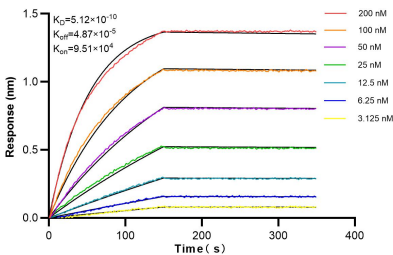
Various lysates were subjected to SDS PAGE followed by western blot with 84449-1-RR (XPO4 antibody) at dilution of 1:8500 incubated at room temperature for 1.5 hours. This data was developed using the same antibody clone with 84449-1-PBS in a different storage buffer formulation.



Immunofluorescent analysis of (4% PFA) fixed K-562 cells using Exportin 4 antibody (84449-1-RR, Clone: 241443A5) at dilution of 1:400 and CoraLite®488-Conjugated Goat Anti-Rabbit IgG(H+L) (SA00013-2). This data was developed using the same antibody clone with 84449-1-PBS in a different storage buffer formulation.



1x10<sup>6</sup> HeLa cells were intracellularly stained with 0.25 ug Exportin 4 Recombinant antibody (84449-1-RR, Clone:241443A5) and APC-Conjugated Goat Anti-Rabbit IgG(H+L)(red), or 0.25 ug Isotype Control (blue). Cells were fixed and permeabilized with True-Nuclear Transcription Factor Buffer Set. This data was developed using the same antibody clone with 84449-1-PBS in a different storage buffer formulation.



Biolayer interferometry (BLI) kinetic assays of 84449-1-RR against Human Exportin 4 were performed. The affinity constant is 0.512 nM.