

For Research Use Only

# GMEB1-Specific Recombinant antibody

Catalog Number: 84448-1-RR

Featured Product



## Basic Information

Catalog Number:

84448-1-RR

Concentration:

1000 µg/ml

Source:

Rabbit

Isotype:

IgG

GenBank Accession Number:

NM\_006582

GeneID (NCBI):

10691

UNIPROT ID:

Q9Y692

Full Name:

glucocorticoid modulatory element binding protein 1

Calculated MW:

63 kDa

Observed MW:

88 kDa

Purification Method:

Protein A purification

CloneNo.:

241447C6

Recommended Dilutions:

WB: 1:5000-1:50000

FC (Intra): 0.25 µg per 10<sup>6</sup> cells in a 100 µl suspension

## Applications

Tested Applications:

WB, FC (Intra), ELISA

Species Specificity:

human

Positive Controls:

WB : HeLa cells, HepG2 cells, A549 cells, Daudi cells

FC (Intra) : HeLa cells,

## Background Information

GMEB1 is a trans-acting factor that binds to glucocorticoid modulatory elements (GME), acting in estrogen receptor-regulated pathway GREB1 is expressed in proliferating prostate tissue & prostate cancer and is thought to function in hormone-dependent cancer growth. It associates with GMEB2 protein, and the complex is essential for parvovirus DNA replication.

## Storage

Storage:

Store at -20°C. Stable for one year after shipment.

Storage Buffer:

PBS with 0.02% sodium azide and 50% glycerol, pH7.3

Aliquoting is unnecessary for -20°C storage

For technical support and original validation data for this product please contact:

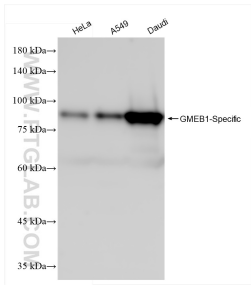
T: 4006900926

E: Proteintech-CN@ptglab.com

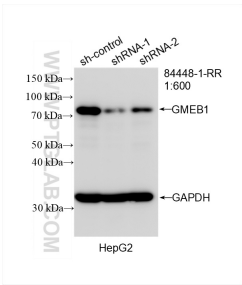
W: ptgcn.com

This product is exclusively available under Proteintech Group brand and is not available to purchase from any other manufacturer.

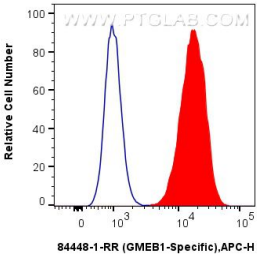
## Selected Validation Data



Various lysates were subjected to SDS PAGE followed by western blot with 84448-1-RR (GMEB1-Specific antibody) at dilution of 1:10000 incubated at room temperature for 1.5 hours.



WB result of GMEB1-Specific antibody (84448-1-RR; 1:600; incubated at room temperature for 1.5 hours) with sh-Control and sh-GMEB1-Specific transfected HepG2 cells.



1x10<sup>6</sup> HeLa cells were intracellularly stained with 0.25 ug GMEB1-Specific Recombinant antibody (84448-1-RR, Clone:241447C6) and APC-Conjugated Goat Anti-Rabbit IgG(H+L)(red), or 0.25 ug Isotype Control (blue). Cells were fixed and permeabilized with True-Nuclear Transcription Factor Buffer Set.