

For Research Use Only

# ATG9A Recombinant antibody, PBS Only (Capture)

Catalog Number: 84433-1-PBS



## Basic Information

Catalog Number:

84433-1-PBS

Concentration:

1 mg/ml

Source:

Rabbit

Isotype:

IgG

Immunogen Catalog Number:

AG24212

GenBank Accession Number:

BC065534

GeneID (NCBI):

79065

UNIPROT ID:

Q7Z3C6

Full Name:

ATG9 autophagy related 9 homolog A  
(S. cerevisiae)

Calculated MW:

837 aa, 94 kDa

Purification Method:

Protein A purification

CloneNo.:

241652E5

## Applications

Tested Applications:

Cytometric bead array, Sandwich ELISA, Indirect ELISA,  
Sample test

Species Specificity:

human

## Background Information

### Storage

Storage:

Store at -80°C.

The product is shipped with ice packs. Upon receipt, store it immediately at -80°C

Storage Buffer:

PBS only, pH7.3

For technical support and original validation data for this product please contact:

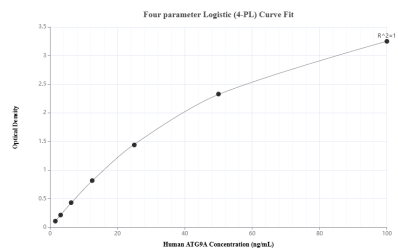
T: 4006900926

E: Proteintech-CN@ptglab.com

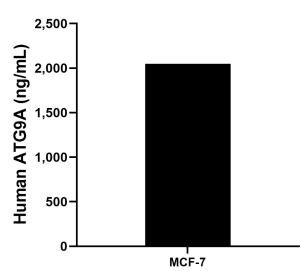
W: ptgcn.com

This product is exclusively available under Proteintech Group brand and is not available to purchase from any other manufacturer.

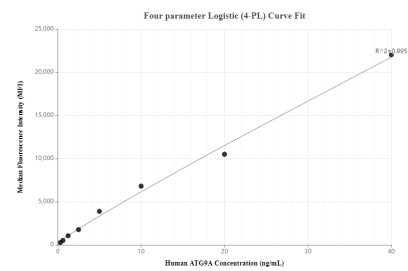
## Selected Validation Data



Sandwich ELISA standard curve of MP01278-1, Human ATG9A Recombinant Matched Antibody Pair - PBS only. 84433-1-PBS was coated to a plate as the capture antibody and incubated with serial dilutions of standard Ag24212. 84433-2-PBS was HRP conjugated as the detection antibody. Range: 1.56-100 ng/mL



The mean ATG9A concentration was determined to be 2,049.94 ng/mL in MCF-7 cell extract based on a 1.2 mg/mL extract load.



Cytometric bead array standard curve of MP01278-1, ATG9A Recombinant Matched Antibody Pair, PBS Only. Capture antibody: 84433-1-PBS. Detection antibody: 84433-2-PBS. Standard: Ag24212. Range: 0.313-40 ng/mL