

For Research Use Only

Mouse Ki-67 Recombinant antibody, PBS Only (Detector)

Catalog Number: 84432-1-PBS



Basic Information

Catalog Number:

84432-1-PBS

Size:

1 mg/ml

Source:

Rabbit

Isotype:

IgG

GenBank Accession Number:

NM_001081117.2

GeneID (NCBI):

17345

UNIPROT ID:

E9PVX6-1

Full Name:

antigen identified by monoclonal
antibody Ki 67

Calculated MW:

351kDa

Observed MW:

350 kDa

Purification Method:

Protein A purification

CloneNo.:

241768E2

Applications

Tested Applications:

WB, IHC, IF/ICC, Cytometric bead array, Indirect ELISA

Species Specificity:

mouse, rat

Background Information

The Ki-67 protein (also known as MKI67) is a cellular marker for proliferation. Ki67 is present during all active phases of the cell cycle (G1, S, G2 and M), but is absent in resting cells (G0). Cellular content of Ki-67 protein markedly increases during cell progression through S phase of the cell cycle. Therefore, the nuclear expression of Ki67 can be evaluated to assess tumor proliferation by immunohistochemistry.

Storage

Storage:

Store at -80°C.

The product is shipped with ice packs. Upon receipt, store it immediately at -80°C

Storage Buffer:

PBS Only

For technical support and original validation data for this product please contact:

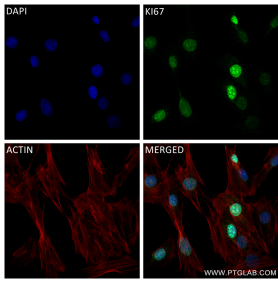
T: 4006900926

E: Proteintech-CN@ptglab.com

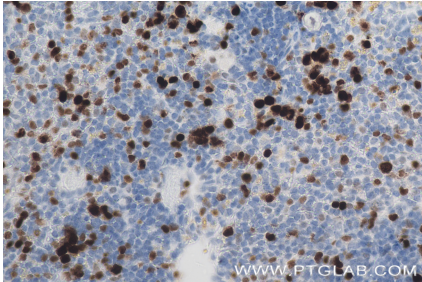
W: ptgcn.com

This product is exclusively available under Proteintech Group brand and is not available to purchase from any other manufacturer.

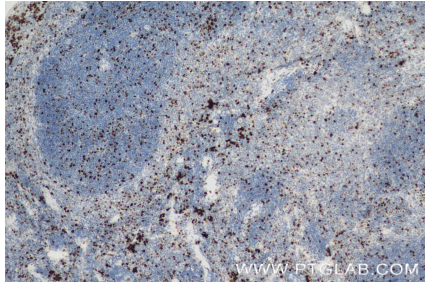
Selected Validation Data



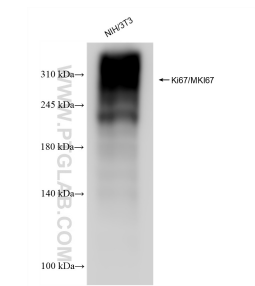
Immunofluorescent analysis of (4% PFA) fixed C2C12 cells using Ki-67 antibody (84432-1-RR, Clone: 241768E2) at dilution of 1:400 and CoraLite®488-Conjugated Goat Anti-Rabbit IgG(H+L) (SA00013-2), CL594-Phalloidin (red). This data was developed using the same antibody clone with 84432-1-PBS in a different storage buffer formulation.



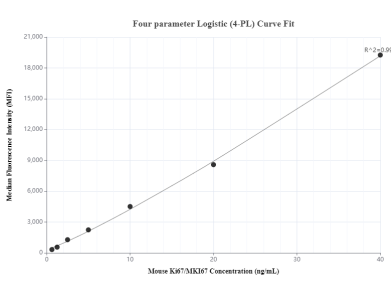
Immunohistochemical analysis of paraffin-embedded mouse spleen tissue slide using 84432-1-RR (Ki-67 antibody) at dilution of 1:200 (under 40x lens). Heat mediated antigen retrieval with Tris-EDTA buffer (pH 9.0). This data was developed using the same antibody clone with 84432-1-PBS in a different storage buffer formulation.



Immunohistochemical analysis of paraffin-embedded mouse spleen tissue slide using 84432-1-RR (Ki-67 antibody) at dilution of 1:200 (under 10x lens). Heat mediated antigen retrieval with Tris-EDTA buffer (pH 9.0). This data was developed using the same antibody clone with 84432-1-PBS in a different storage buffer formulation.



NIH/3T3 cells were subjected to SDS PAGE followed by western blot with 84432-1-RR (Ki67/MKI67 antibody) at dilution of 1:3000 incubated at room temperature for 1.5 hours. This data was developed using the same antibody clone with 84432-1-PBS in a different storage buffer formulation.



Cytometric bead array standard curve of MP01277-1, MOUSE Ki-67 Recombinant Matched Antibody Pair, PBS Only. Capture antibody: 84432-2-PBS. Detection antibody: 84432-1-PBS. Standard: Eg1548. Range: 0.625-40 ng/mL.