

For Research Use Only

Mouse SIRP Alpha/CD172a Recombinant antibody, PBS Only (Capture/Detector)

Catalog Number: 84430-2-PBS



Basic Information

Catalog Number: 84430-2-PBS	GenBank Accession Number: NM_007547.4	Purification Method: Protein A purification
Concentration: 1 mg/ml	GeneID (NCBI): 19261	CloneNo.: 241794D9
Source: Rabbit	UNIPROT ID: P97797-2	
Isotype: IgG	Full Name: signal-regulatory protein alpha	
Immunogen Catalog Number: EG1520	Calculated MW: 56 kDa	
	Observed MW: 90-140 kDa	

Applications

Tested Applications:
WB, IHC, IF/ICC, Cytometric bead array, Sandwich
ELISA, Indirect ELISA, Sample test

Species Specificity:
mouse

Background Information

SIRP Alpha, also known as CD172a, SHPS-1, and BIT, belongs to the SIRP family. SIRP Alpha is a transmembrane glycoprotein expressed explicitly on myeloid cells and provides a "do not eat me" signal after engaging with integrin-associated protein CD47 on tumor cells (PMID: 36419386). SIRP Alpha shows heterogeneity in molecular weight (~65-120 kDa) in various tissues due to differential glycosylation (PMID: 18051954).

Storage

Storage:
Store at -80°C.
The product is shipped with ice packs. Upon receipt, store it immediately at -80°C

Storage Buffer:
PBS only, pH7.3

For technical support and original validation data for this product please contact:

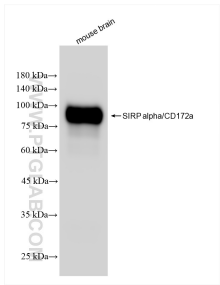
T: 4006900926

E: Proteintech-CN@ptglab.com

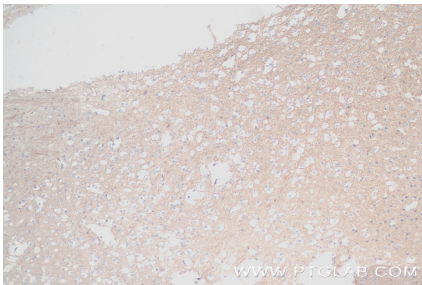
W: ptgcn.com

This product is exclusively available under Proteintech Group brand and is not available to purchase from any other manufacturer.

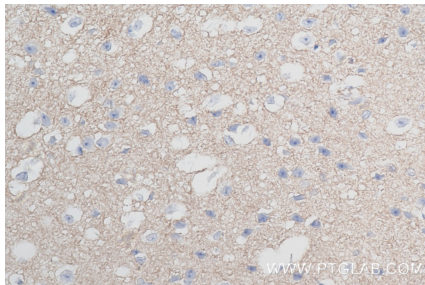
Selected Validation Data



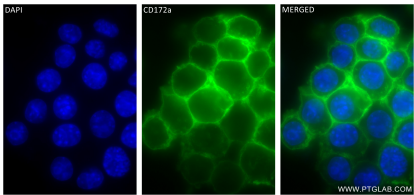
Various lysates were subjected to SDS PAGE followed by western blot with 84430-2-RR (SIRP alpha/CD172a antibody) at dilution of 1:10000 incubated at room temperature for 1.5 hours. This data was developed using the same antibody clone with 84430-2-PBS in a different storage buffer formulation.



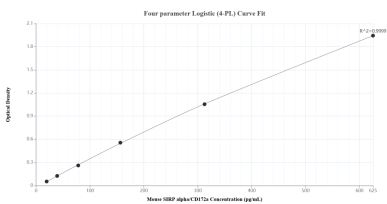
Immunohistochemical analysis of paraffin-embedded mouse brain tissue slide using 84430-2-RR (SIRP Alpha/CD172a antibody) at dilution of 1:1000 (under 10x lens). Heat mediated antigen retrieval with Tris-EDTA buffer (pH 9.0). This data was developed using the same antibody clone with 84430-2-PBS in a different storage buffer formulation.



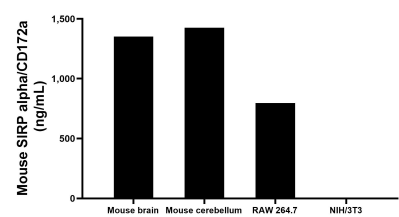
Immunohistochemical analysis of paraffin-embedded mouse brain tissue slide using 84430-2-RR (SIRP Alpha/CD172a antibody) at dilution of 1:1000 (under 40x lens). Heat mediated antigen retrieval with Tris-EDTA buffer (pH 9.0). This data was developed using the same antibody clone with 84430-2-PBS in a different storage buffer formulation.



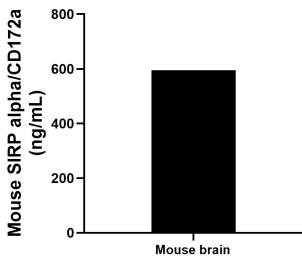
Immunofluorescent analysis of (4% PFA) fixed RAW 264.7 cells using SIRP alpha/CD172a antibody (84430-2-RR, Clone: 241794D9) at dilution of 1:400 and CoraLite®488-Conjugated Goat Anti-Rabbit IgG(H+L) (SA00013-2). This data was developed using the same antibody clone with 84430-2-PBS in a different storage buffer formulation.



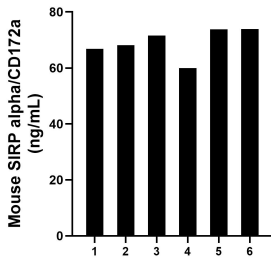
Sandwich ELISA standard curve of MP01311-4, Mouse SIRP alpha/CD172a Recombinant Matched Antibody Pair - PBS only. 84430-3-PBS was coated to a plate as the capture antibody and incubated with serial dilutions of standard Eg1520. 84430-2-PBS was HRP conjugated as the detection antibody. Range: 19.5-625 pg/mL.



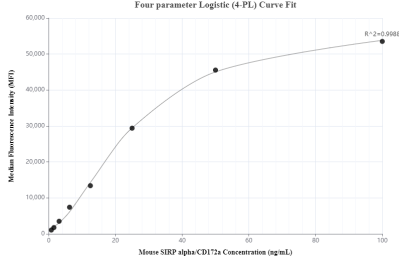
The mean SIRP alpha/CD172a concentration was determined to be 1,352.0 ng/mL in mouse brain tissue extract based on a 2.0 mg/mL extract load, 1,425.8 ng/mL in mouse cerebellum tissue extract based on a 2.9 mg/mL extract load, 796.6 ng/mL in RAW 264.7 cell extract based on a 4.2 mg/mL extract load and 4.0 ng/mL in NIH/3T3 cell extract based on a 4.4 mg/mL extract load.



The mean SIRP alpha/CD172a concentration was determined to be 595.2 ng/mL in mouse brain tissue homogenate based on a 2.2 mg/mL extract load.



Serum of six mice was measured. The SIRP alpha/CD172a concentration of detected samples was determined to be 69.0 ng/mL with a range of 59.9-73.9 ng/mL.



Cytometric bead array standard curve of MP01311-2, MOUSE SIRP Alpha/CD172a Recombinant Matched Antibody Pair, PBS Only. Capture antibody: 84430-2-PBS. Detection antibody: 84430-3-PBS. Standard: Eg1520. Range: 0.781-100 ng/mL.