

For Research Use Only

Neuropilin 1 Recombinant antibody, PBS Only (Capture/Detector)

Catalog Number: 84429-4-PBS



Basic Information

Catalog Number:

84429-4-PBS

Size:

1 mg/ml

Source:

Rabbit

Isotype:

IgG

GenBank Accession Number:

BC007533

GeneID (NCBI):

8829

UNIPROT ID:

O14786

Full Name:

neuropilin 1

Purification Method:

Protein A purification

CloneNo.:

241812E11

Applications

Tested Applications:

Cytometric bead array, Sandwich ELISA, Indirect ELISA,
Sample test

Species Specificity:

human

Background Information

Storage

Storage:

Store at -80°C.

The product is shipped with ice packs. Upon receipt, store it immediately at -80°C

Storage Buffer:

PBS Only

For technical support and original validation data for this product please contact:

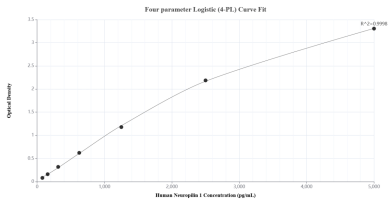
T: 4006900926

E: Proteintech-CN@ptglab.com

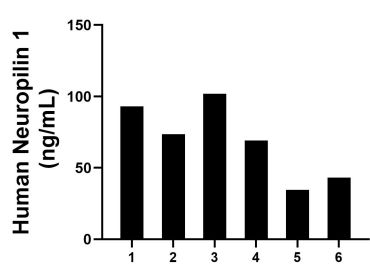
W: ptgcn.com

This product is exclusively available under Proteintech Group brand and is not available to purchase from any other manufacturer.

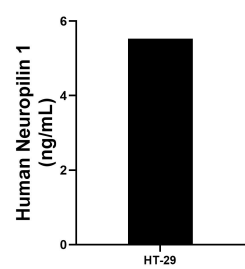
Selected Validation Data



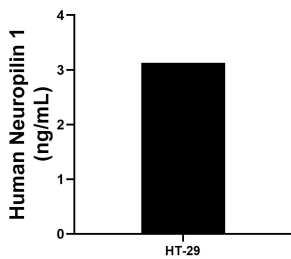
Sandwich ELISA standard curve of MP01310-4, Human Neuropilin 1 Recombinant Matched Antibody Pair - PBS only. 84429-2-PBS was coated to a plate as the capture antibody and incubated with serial dilutions of standard Eg2331. 84429-4-PBS was HRP conjugated as the detection antibody. Range: 78.1-5000 pg/mL



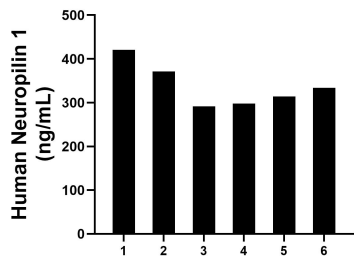
Human milk of six individual healthy human donors was measured. The Neuropilin 1 concentration of detected samples was determined to be 69.2 ng/mL with a range of 34.6-102.0 ng/mL



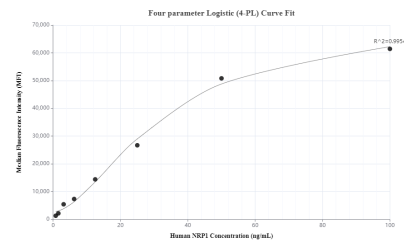
The mean Neuropilin 1 concentration was determined to be 5.5 ng/mL in HT-29 cell extract based on a 1.5 mg/mL extract load.



HT-29 were cultured in DMEM supplemented with 10% fetal bovine serum, 2.5 mM L-glutamine, 100 U/mL penicillin, and 100 µg/mL streptomycin sulfate. An aliquot of the cell culture supernate was removed, assayed for human Neuropilin 1, and measured 3.1 ng/mL



Serum of six individual healthy human donors was measured. The Neuropilin 1 concentration of detected samples was determined to be 338.2 ng/mL with a range of 291.5-420.8 ng/mL



Cytometric bead array standard curve of MP01310-1, Neuropilin 1 Recombinant Matched Antibody Pair, PBS Only. Capture antibody: 84429-4-PBS. Detection antibody: 84429-3-PBS. Standard: Eg2331. Range: 0.781-100 ng/mL