

For Research Use Only

# PSMA5 Recombinant antibody

Catalog Number: 84424-4-RR



## Basic Information

### Catalog Number:

84424-4-RR

### Size:

1000 ug/ml

### Source:

Rabbit

### Isotype:

IgG

### Immunogen Catalog Number:

AG34928

### GenBank Accession Number:

BC103751

### GeneID (NCBI):

5686

### UNIPROT ID:

P28066

### Full Name:

proteasome (prosome, macropain)

subunit, alpha type, 5

### Calculated MW:

241 aa, 26 kDa

### Purification Method:

Protein A purification

### CloneNo.:

241629H2

### Recommended Dilutions:

IF/ICC 1:125-1:500

## Applications

### Tested Applications:

IF/ICC, ELISA

### Species Specificity:

human

### Positive Controls:

IF/ICC : HeLa cells, U2OS cells

## Background Information

Proteasome subunit alpha type-5(PSMA5) is a component of the 20S core proteasome complex involved in the proteolytic degradation of most intracellular proteins. This complex plays numerous essential roles within the cell by associating with different regulatory particles. It binds to two 19S regulatory particles(RP) to form the 26S proteasome, an ATP-dependent multisubunit protease that degrades polyubiquitinated proteins into small peptides. (PMID: 26661102)

## Storage

### Storage:

Store at -20°C. Stable for one year after shipment.

### Storage Buffer:

PBS with 0.02% sodium azide and 50% glycerol pH 7.3.

Aliquoting is unnecessary for -20°C storage

For technical support and original validation data for this product please contact:

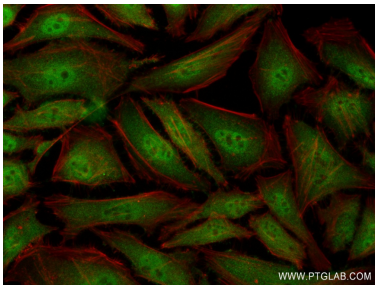
T: 4006900926

E: [Proteintech-CN@ptglab.com](mailto:Proteintech-CN@ptglab.com)

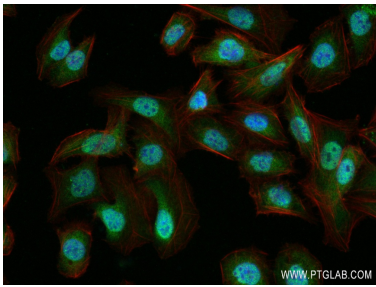
W: [ptgcn.com](http://ptgcn.com)

This product is exclusively available under Proteintech Group brand and is not available to purchase from any other manufacturer.

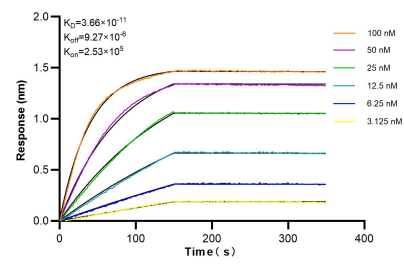
Selected Validation Data



Immunofluorescent analysis of (4% PFA) fixed HeLa cells using PSMA5 antibody (84424-4-RR, Clone: 241629H2 ) at dilution of 1:250 and CoraLite®488-Conjugated Goat Anti-Rabbit IgG(H+L) (SA00013-2), CL594-Phalloidin (red).



Immunofluorescent analysis of (4% PFA) fixed U2OS cells using PSMA5 antibody (84424-4-RR, Clone: 241629H2 ) at dilution of 1:250 and CoraLite®488-Conjugated Goat Anti-Rabbit IgG(H+L) (SA00013-2), CL594-Phalloidin (red).



Biolayer interferometry (BLI) kinetic assays of 84424-4-RR against Human PSMA5 were performed. The affinity constant is 36.6 pM.