

For Research Use Only

PSMA5 Recombinant antibody

Catalog Number: 84424-1-RR



Basic Information

Catalog Number:

84424-1-RR

Size:

1000 ug/ml

Source:

Rabbit

Isotype:

IgG

Immunogen Catalog Number:

AG34928

GenBank Accession Number:

BC103751

GeneID (NCBI):

5686

UNIPROT ID:

P28066

Full Name:

proteasome (prosome, macropain)
subunit, alpha type, 5

Calculated MW:

241 aa, 26 kDa

Observed MW:

26 kDa

Purification Method:

Protein A purification

CloneNo.:

241629A11

Recommended Dilutions:

WB 1:5000-1:50000

Applications

Tested Applications:

WB, ELISA

Species Specificity:

human, mouse

Positive Controls:

WB : JAR cells, HeLa cells, HepG2 cells, HEK-293T cells,
mouse thymus tissue, mouse liver tissue

Background Information

Proteasome subunit alpha type-5(PSMA5) is a component of the 20S core proteasome complex involved in the proteolytic degradation of most intracellular proteins. This complex plays numerous essential roles within the cell by associating with different regulatory particles. It binds to two 19S regulatory particles(RP) to form the 26S proteasome, an ATP-dependent multisubunit protease that degrades polyubiquitinated proteins into small peptides. (PMID: 26661102)

Storage

Storage:

Store at -20°C. Stable for one year after shipment.

Storage Buffer:

PBS with 0.02% sodium azide and 50% glycerol pH 7.3.

Aliquoting is unnecessary for -20°C storage

For technical support and original validation data for this product please contact:

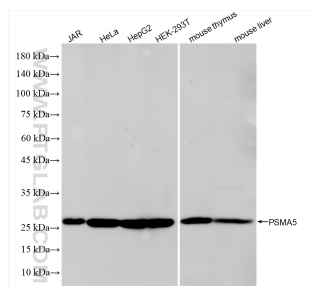
T: 4006900926

E: Proteintech-CN@ptglab.com

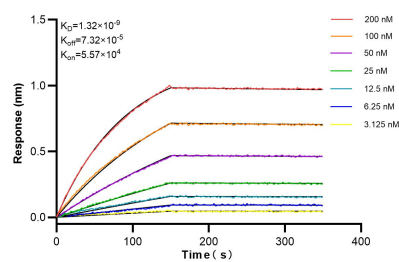
W: ptgcn.com

This product is exclusively available under Proteintech Group brand and is not available to purchase from any other manufacturer.

Selected Validation Data



Various lysates were subjected to SDS PAGE followed by western blot with 84424-1-RR (PSMA5 antibody) at dilution of 1:10000 incubated at room temperature for 1.5 hours.



Biolayer interferometry (BLI) kinetic assays of 84424-1-RR against Human PSMA5 were performed. The affinity constant is 1.32 nM.