

For Research Use Only

ACVRL1 Recombinant antibody, PBS Only (Capture/Detector)

Catalog Number: 84421-2-PBS



Basic Information

Catalog Number:

84421-2-PBS

Size:

1 mg/ml

Source:

Rabbit

Isotype:

IgG

GenBank Accession Number:

BC042637

GeneID (NCBI):

94

UNIPROT ID:

P37023

Full Name:

activin A receptor type II-like 1

Calculated MW:

56 kDa

Purification Method:

Protein A purification

CloneNo.:

241686D9

Applications

Tested Applications:

Cytometric bead array, Sandwich ELISA, Indirect ELISA, Sample test

Species Specificity:

human

Background Information

Storage

Storage:

Store at -80°C.

The product is shipped with ice packs. Upon receipt, store it immediately at -80°C

Storage Buffer:

PBS Only

For technical support and original validation data for this product please contact:

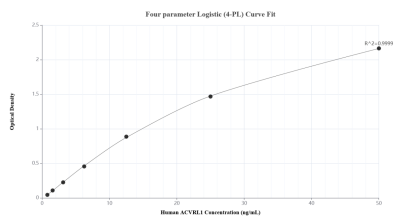
T: 4006900926

E: Proteintech-CN@ptglab.com

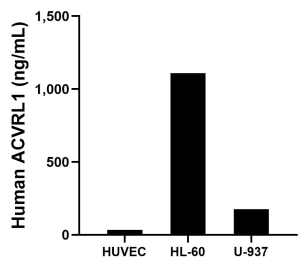
W: ptgcn.com

This product is exclusively available under Proteintech Group brand and is not available to purchase from any other manufacturer.

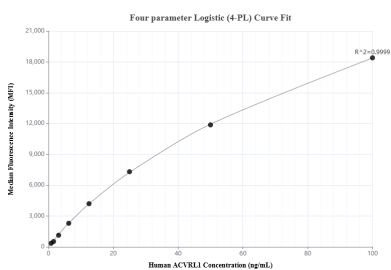
Selected Validation Data



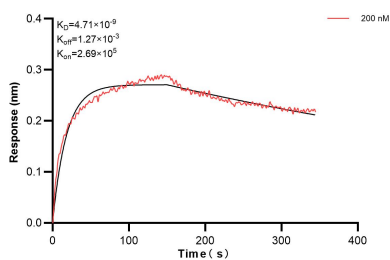
Sandwich ELISA standard curve of MP01306-2, Human ACVRL1 Recombinant Matched Antibody Pair - PBS only. 84421-1-PBS was coated to a plate as the capture antibody and incubated with serial dilutions of standard Eg2132. 84421-2-PBS was HRP conjugated as the detection antibody. Range: 0.781-50 ng/mL



The mean ACVRL1 concentration was determined to be 34.48 ng/mL in HUVEC cell extract based on a 0.91 mg/mL extract load, 1108.74 ng/mL in HL-60 cell extract based on a 3.00 mg/mL extract load and 176.59 ng/mL in U-937 cell extract based on a 1.40 mg/mL extract load.



Cytometric bead array standard curve of MP01306-1, ACVRL1 Recombinant Matched Antibody Pair, PBS Only. Capture antibody: 84421-1-PBS. Detection antibody: 84421-2-PBS. Standard: Eg2132. Range: 0.781-100 ng/mL



Bi-layer interferometry (BLI) kinetic assay of 84421-2-PBS against Human ACVRL1 was performed. The affinity constant is 4.71 nM.