

For Research Use Only

ACVRL1 Recombinant antibody, PBS Only (Capture/Detector)

Catalog Number: 84421-1-PBS



Basic Information

Catalog Number: 84421-1-PBS	GenBank Accession Number: BC042637	Purification Method: Protein A purification
Size: 1 mg/ml	GeneID (NCBI): 94	CloneNo.: 241686B9
Source: Rabbit	UNIPROT ID: P37023	
Isotype: IgG	Full Name: activin A receptor type II-like 1	
	Calculated MW: 56 kDa	

Applications

Tested Applications:
IF/ICC, Cytometric bead array, Sandwich ELISA,
Indirect ELISA, Sample test

Species Specificity:
human

Background Information

ACVRL1 (also known as ALK1) is a type I cell-surface receptor for the TGF-beta superfamily of ligands. It shares with other type I receptors a high degree of similarity in serine-threonine kinase subdomains, a glycine- and serine-rich region (called the GS domain) preceding the kinase domain, and a short C-terminal tail. ACVRL1 is highly expressed in endothelial cells and has a critical role in the control of blood vessel development and repair (PMID: 8640225). Mutations in the ACVRL1 gene are associated with hemorrhagic telangiectasia type 2.

Storage

Storage:
Store at -80°C.
The product is shipped with ice packs. Upon receipt, store it immediately at -80°C

Storage Buffer:
PBS Only

For technical support and original validation data for this product please contact:

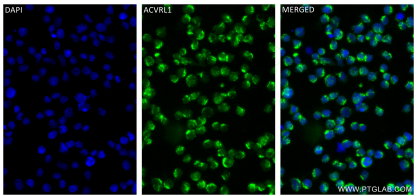
T: 4006900926

E: Proteintech-CN@ptglab.com

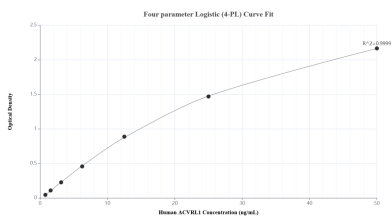
W: ptgcn.com

This product is exclusively available under Proteintech Group brand and is not available to purchase from any other manufacturer.

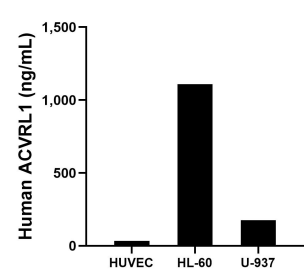
Selected Validation Data



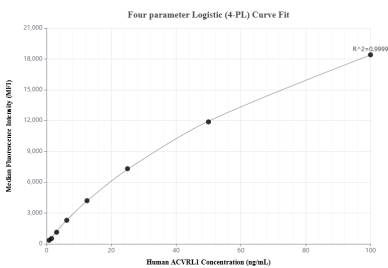
Immunofluorescent analysis of (4% PFA) fixed Jurkat cells using ACVRL1 antibody (84421-1-RR, Clone: 241686B9) at dilution of 1:250 and CoraLite®488-Conjugated Goat Anti-Rabbit IgG(H+L) (SA00013-2). This data was developed using the same antibody clone with 84421-1-PBS in a different storage buffer formulation.



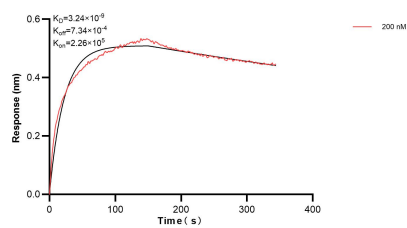
Sandwich ELISA standard curve of MP01306-2, Human ACVRL1 Recombinant Matched Antibody Pair - PBS only. 84421-1-PBS was coated to a plate as the capture antibody and incubated with serial dilutions of standard Eg2132. 84421-2-PBS was HRP conjugated as the detection antibody. Range: 0.781-50 ng/mL.



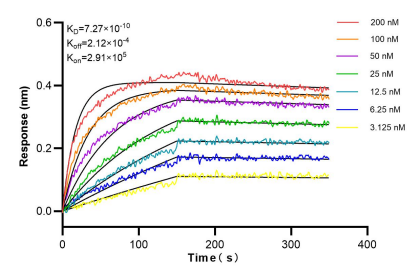
The mean ACVRL1 concentration was determined to be 34.48 ng/mL in HUVEC cell extract based on a 0.91 mg/mL extract load, 1108.74 ng/mL in HL-60 cell extract based on a 3.00 mg/mL extract load and 176.59 ng/mL in U-937 cell extract based on a 1.40 mg/mL extract load.



Cytometric bead array standard curve of MP01306-1, ACVRL1 Recombinant Matched Antibody Pair, PBS Only. Capture antibody: 84421-2-PBS. Detection antibody: 84421-1-PBS. Standard: Eg2132. Range: 0.781-100 ng/mL.



Biolayer interferometry (BLI) kinetic assay of 84421-1-PBS against Human ACVRL1 was performed. The affinity constant is 3.24 nM.



Biolayer interferometry (BLI) kinetic assays of 84421-1-RR against Human ACVRL1 were performed. The affinity constant is 0.727 nM.