

For Research Use Only

Mouse CD157 Recombinant antibody, PBS Only (Capture/Detector)

Catalog Number: 84417-4-PBS



Basic Information

Catalog Number:	84417-4-PBS	GenBank Accession Number:	Purification Method:
Concentration:	1 mg/ml	GeneID (NCBI):	Protein A purification
Source:	Rabbit	12182	CloneNo.:
Isotype:	IgG	UNIPROT ID:	241822H1
Immunogen Catalog Number:	EG1528	Q64277	
		Full Name:	
		bone marrow stromal cell antigen 1	
		Calculated MW:	
		35kDa	

Applications

Tested Applications:
Cytometric bead array, Sandwich ELISA, Indirect ELISA,
Sample test

Species Specificity:
mouse

Background Information

Storage

Storage:
Store at -80°C.
The product is shipped with ice packs. Upon receipt, store it immediately at -80°C

Storage Buffer:
PBS only, pH7.3

For technical support and original validation data for this product please contact:

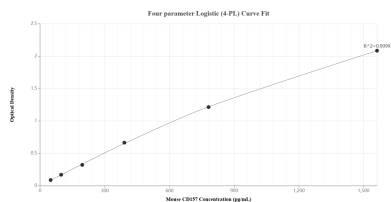
T: 4006900926

E: Proteintech-CN@ptglab.com

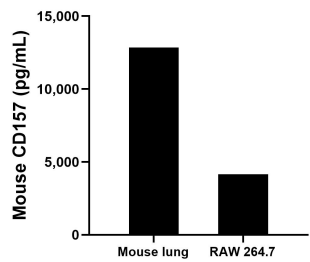
W: ptgcn.com

This product is exclusively available under Proteintech Group brand and is not available to purchase from any other manufacturer.

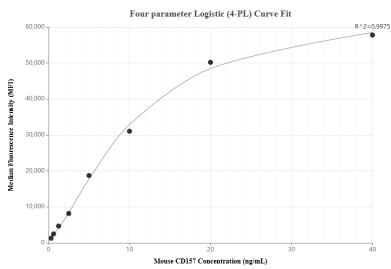
Selected Validation Data



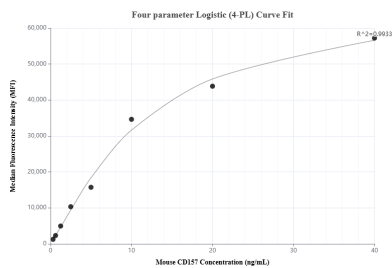
Sandwich ELISA standard curve of MP01303-4, Mouse CD157 Recombinant Matched Antibody Pair - PBS only. 84417-4-PBS was coated to a plate as the capture antibody and incubated with serial dilutions of standard Eg1528. 84417-1-PBS was HRP conjugated as the detection antibody. Range: 48.8-1563 pg/mL.



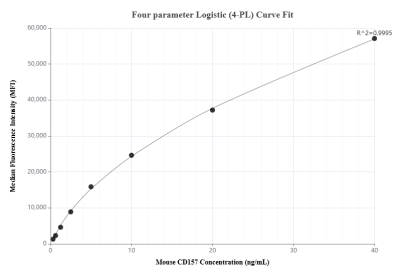
The mean CD157 concentration was determined to be 12,854.1 pg/mL in mouse lung tissue extract based on a 1.6 mg/mL extract load and 4,152.4 pg/mL in RAW 264.7 cell extract based on a 4.8 mg/mL extract load.



Cytometric bead array standard curve of MP01303-1, MOUSE CD157 Recombinant Matched Antibody Pair, PBS Only. Capture antibody: 84417-1-PBS. Detection antibody: 84417-4-PBS. Standard: Eg1528. Range: 0.313-40 ng/mL.



Cytometric bead array standard curve of MP01303-2, MOUSE CD157 Recombinant Matched Antibody Pair, PBS Only. Capture antibody: 84417-2-PBS. Detection antibody: 84417-4-PBS. Standard: Eg1528. Range: 0.313-40 ng/mL.



Cytometric bead array standard curve of MP01303-3, MOUSE CD157 Recombinant Matched Antibody Pair, PBS Only. Capture antibody: 84417-3-PBS. Detection antibody: 84417-4-PBS. Standard: Eg1528. Range: 0.313-40 ng/mL.