

For Research Use Only

# IL-4RA/CD124 Recombinant antibody, PBS Only (Capture/Detector)

Catalog Number: 84414-2-PBS



## Basic Information

Catalog Number:

84414-2-PBS

Size:

1 mg/ml

Source:

Rabbit

Isotype:

IgG

GenBank Accession Number:

NM\_000418.4

GeneID (NCBI):

3566

UNIPROT ID:

P24394-1

Full Name:

interleukin 4 receptor

Calculated MW:

90 kDa

Purification Method:

Protein A purification

CloneNo.:

241824D5

## Applications

Tested Applications:

Cytometric bead array, Sandwich ELISA, Indirect ELISA,  
Sample test

Species Specificity:

human

## Background Information

### Storage

Storage:

Store at -80°C.

**The product is shipped with ice packs. Upon receipt, store it immediately at -80°C**

Storage Buffer:

PBS Only

For technical support and original validation data for this product please contact:

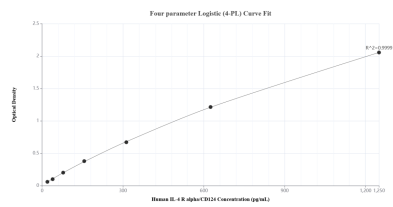
T: 4006900926

E: [Proteintech-CN@ptglab.com](mailto:Proteintech-CN@ptglab.com)

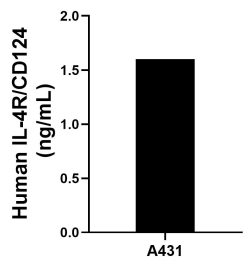
W: [ptgcn.com](http://ptgcn.com)

**This product is exclusively available under Proteintech Group brand and is not available to purchase from any other manufacturer.**

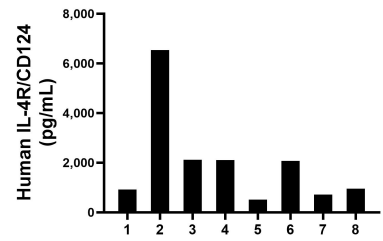
Selected Validation Data



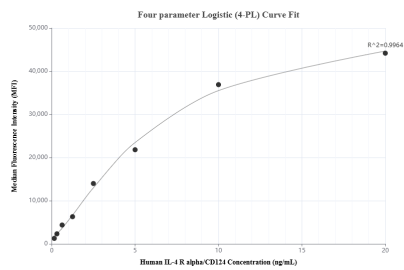
Sandwich ELISA standard curve of MP01282-4, Human IL-4RA/CD124 Recombinant Matched Antibody Pair - PBS only. 84414-7-PBS was coated to a plate as the capture antibody and incubated with serial dilutions of standard Eg1684. 84414-2-PBS was HRP conjugated as the detection antibody. Range: 19.5-1250 pg/mL



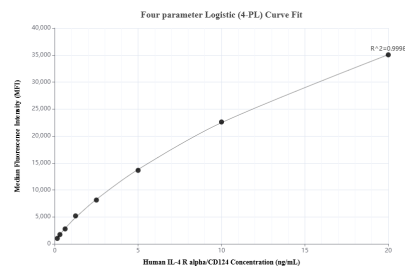
The mean IL-4RA/CD124 concentration was determined to be 1.60 ng/mL in A431 cell extract based on a 1.3 mg/mL extract load.



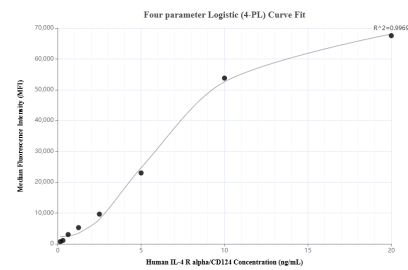
Serum of eight individual healthy human donors was measured. The IL-4RA/CD124 concentration of detected samples was determined to be 1,993.2 pg/mL with a range of 517.2-6,543.1 pg/mL



Cytometric bead array standard curve of MP01282-1, IL-4RA/CD124 Recombinant Matched Antibody Pair, PBS Only. Capture antibody: 84414-2-PBS. Detection antibody: 84414-4-PBS. Standard: Eg1684. Range: 0.156-20 ng/mL



Cytometric bead array standard curve of MP01282-2, IL-4R/IL-4RA/CD124 Recombinant Matched Antibody Pair, PBS Only. Capture antibody: 84422-3-PBS. Detection antibody: 84422-2-PBS. Standard: Eg1684. Range: 0.156-20 ng/mL



Cytometric bead array standard curve of MP01282-3, IL-4 R alpha/IL-4RA/CD124 Recombinant Matched Antibody Pair, PBS Only. Capture antibody: 84422-5-PBS. Detection antibody: 84422-2-PBS. Standard: Eg1684. Range: 0.156-20 ng/mL