

For Research Use Only

CCL20/MIP-3 alpha Recombinant monoclonal antibody

Catalog Number: 84413-3-RR

Featured Product



Basic Information

Catalog Number:

84413-3-RR

Source:

Rabbit

Isotype:

IgG

Immunogen Catalog Number:

EG2398

GenBank Accession Number:

NM_004591.3

GeneID (NCBI):

6364

UNIPROT ID:

P78556-1

Full Name:

chemokine (C-C motif) ligand 20

Calculated MW:

11kDa

Observed MW:

11 kDa

Purification Method:

Protein A purification

CloneNo.:

241694B4

Recommended Dilutions:

WB: 1:5000-1:50000

IHC: 1:1250-1:5000

Applications

Tested Applications:

WB, IHC, ELISA

Species Specificity:

human, mouse

Note-IHC: suggested antigen retrieval with TE buffer pH 9.0; (*) Alternatively, antigen retrieval may be performed with citrate buffer pH 6.0

Positive Controls:

WB : THP-1 cells, HepG2 cells, RAW 264.7 cells, HuH-7 cells, SMMC-7721 cells

IHC : human colon tissue,

Background Information

CCL20, also known as macrophage infiltrating factor protein 3 α , is a C-C chemokine that specifically binds to the receptor CCR6. CCL20 is produced in various tissues and by a wide range of immune cells, including neutrophils, natural killer cells, T-helper type 17 (Th17) cells, B cells, and various antigen-presenting cells, such as dendritic cells (DCs), Langerhans cells, and macrophages. Increased expression of CCL20 is likely involved in the increased recruitment of dendritic cells observed in fibroinflammatory diseases such as chronic obstructive pulmonary disease (COPD). CCL20 expression is increased by the proinflammatory cytokine IL-1 beta.

Storage

Storage:

Store at -20°C. Stable for one year after shipment.

Storage Buffer:

PBS with 0.02% sodium azide and 50% glycerol, pH7.3

Aliquoting is unnecessary for -20°C storage

For technical support and original validation data for this product please contact:

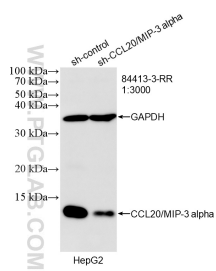
T: 4006900926

E: Proteintech-CN@ptglab.com

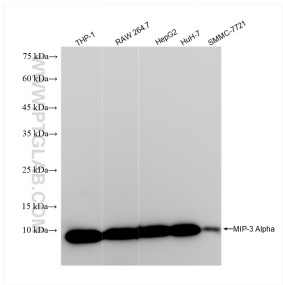
W: ptgcn.com

This product is exclusively available under Proteintech Group brand and is not available to purchase from any other manufacturer.

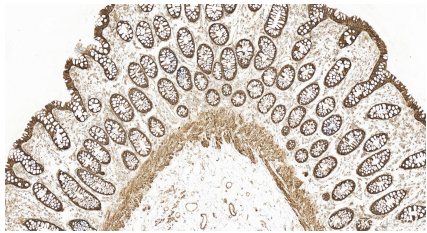
Selected Validation Data



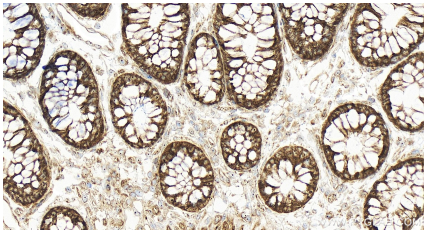
WB result of CCL20/MIP-3 alpha antibody (84413-3-RR; 1:3000; incubated at room temperature for 1.5 hours) with sh-Control and sh-CCL20/MIP-3 alpha transfected HepG2 cells.



Various lysates were subjected to SDS PAGE followed by western blot with 84413-3-RR (CCL20/MIP-3 alpha antibody) at dilution of 1:10000 incubated at room temperature for 1.5 hours.



Immunohistochemical analysis of paraffin-embedded human colon tissue slide using 84413-3-RR (CCL20/MIP-3 alpha antibody) at dilution of 1:2500 (under 10x lens). Heat mediated antigen retrieval with Tris-EDTA buffer (pH 9.0).



Immunohistochemical analysis of paraffin-embedded human colon tissue slide using 84413-3-RR (CCL20/MIP-3 alpha antibody) at dilution of 1:2500 (under 40x lens). Heat mediated antigen retrieval with Tris-EDTA buffer (pH 9.0).