

For Research Use Only

ACE Recombinant antibody, PBS Only (Capture/Detector)

Catalog Number: 84407-3-PBS



Basic Information

Catalog Number:

84407-3-PBS

Size:

1 mg/ml

Source:

Rabbit

Isotype:

IgG

GenBank Accession Number:

NM_000789.4

GeneID (NCBI):

1636

UNIPROT ID:

P12821-1

Full Name:

angiotensin I converting enzyme
(peptidyl-di-peptidase A) 1

Calculated MW:

150kDa

Purification Method:

Protein A purification

CloneNo.:

241763D8

Applications

Tested Applications:

Cytometric bead array, Sandwich ELISA, Indirect ELISA,
Sample test

Species Specificity:

human

Background Information

Storage

Storage:

Store at -80°C.

The product is shipped with ice packs. Upon receipt, store it immediately at -80°C

Storage Buffer:

PBS Only

For technical support and original validation data for this product please contact:

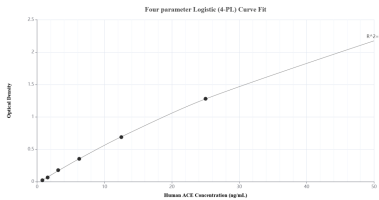
T: 4006900926

E: Proteintech-CN@ptglab.com

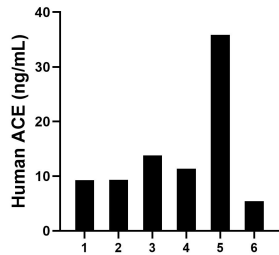
W: ptgcn.com

This product is exclusively available under Proteintech Group brand and is not available to purchase from any other manufacturer.

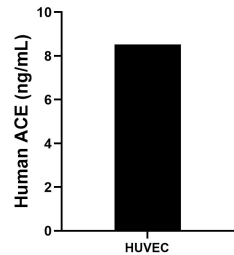
Selected Validation Data



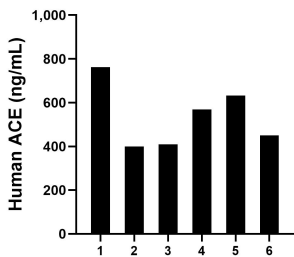
Sandwich ELISA standard curve of MP01285-3, Human ACE Recombinant Matched Antibody Pair - PBS only. 84407-2-PBS was coated to a plate as the capture antibody and incubated with serial dilutions of standard Eg2298. 84407-3-PBS was HRP conjugated as the detection antibody. Range: 0.781-50 ng/mL



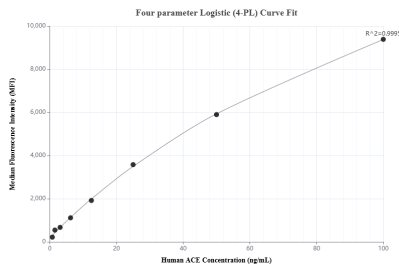
Saliva of six individual healthy human donors was measured. The ACE concentration of detected samples was determined to be 14.19 ng/mL with a range of 5.44-35.87 ng/mL



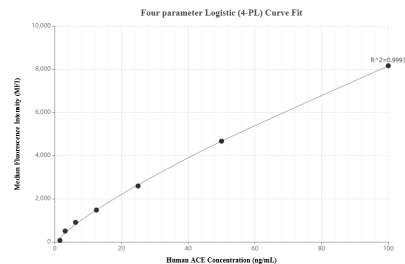
HUVEC were cultured in DMEM supplemented with 10% fetal bovine serum, 2.5 mM L-glutamine, 100 U/mL penicillin, and 100 µg/mL streptomycin sulfate. An aliquot of the cell culture supernate was removed, assayed for human ACE, and measured 8.52 ng/mL



Serum of six individual healthy human donors was measured. The ACE concentration of detected samples was determined to be 537.16 ng/mL with a range of 398.84-762.22 ng/mL



Cytometric bead array standard curve of MP01285-1, ACE Recombinant Matched Antibody Pair, PBS Only. Capture antibody: 84407-3-PBS. Detection antibody: 84407-1-PBS. Standard: Eg2298. Range: 0.781-100 ng/mL



Cytometric bead array standard curve of MP01285-2, ACE Recombinant Matched Antibody Pair, PBS Only. Capture antibody: 84407-3-PBS. Detection antibody: 84407-2-PBS. Standard: Eg2298. Range: 1.563-100 ng/mL