

For Research Use Only

CD45(220-577) Recombinant antibody, PBS Only (Capture/Detector)

Catalog Number: 84405-2-PBS



Basic Information

Catalog Number:

84405-2-PBS

Size:

1 mg/ml

Source:

Rabbit

Isotype:

IgG

GenBank Accession Number:

GeneID (NCBI):

5788

ENSEMBL Gene ID:

ENSG00000081237

Full Name:

protein tyrosine phosphatase,
receptor type, C

Purification Method:

Protein A purification

CloneNo.:

241670F1

Applications

Tested Applications:

Cytometric bead array, Sandwich ELISA, Indirect ELISA,
Sample test

Species Specificity:

human

Background Information

Storage

Storage:

Store at -80°C.

The product is shipped with ice packs. Upon receipt, store it immediately at -80°C

Storage Buffer:

PBS Only

For technical support and original validation data for this product please contact:

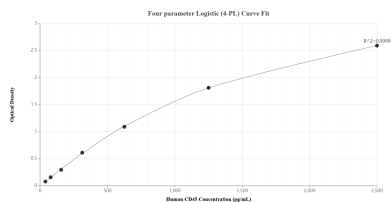
T: 4006900926

E: Proteintech-CN@ptglab.com

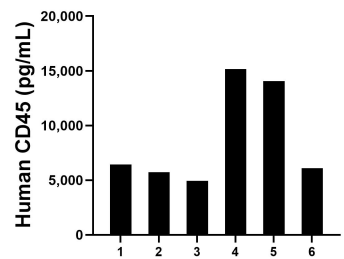
W: ptgcn.com

This product is exclusively available under Proteintech Group brand and is not available to purchase from any other manufacturer.

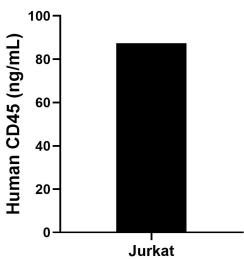
Selected Validation Data



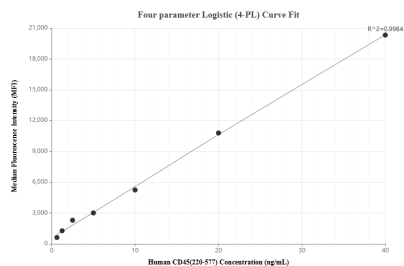
Sandwich ELISA standard curve of MP01280-3, Human CD45 Recombinant Matched Antibody Pair - PBS only. 84405-4-PBS was coated to a plate as the capture antibody and incubated with serial dilutions of standard Eg2486. 84405-2-PBS was HRP conjugated as the detection antibody. Range: 39.1-2500 pg/mL.



Plasma of six individual healthy human donors was measured. The CD45 concentration of detected samples was determined to be 8,737.3 pg/mL with a range of 4,942.4 -15,153.0 pg/mL.



The mean CD45 concentration was determined to be 87.3 ng/mL in Jurkat cell extract based on a 1.5 mg/mL extract load.



Cytometric bead array standard curve of MP01280-2, CD45 Recombinant Matched Antibody Pair, PBS Only. Capture antibody: 84405-2-PBS. Detection antibody: 84405-1-PBS. Standard: Eg2486. Range: 0.625-40 ng/mL.