

For Research Use Only

# LRRC2 Recombinant antibody

Catalog Number: 84404-1-RR



## Basic Information

Catalog Number: 84404-1-RR	GenBank Accession Number: BC029118	Purification Method: Protein A purification
Concentration: 1000 ug/ml	GeneID (NCBI): 79442	CloneNo.: 241132G1
Source: Rabbit	UNIPROT ID: Q9BYS8	Recommended Dilutions: IHC: 1:50-1:500 IF/ICC: 1:125-1:500 FC (Intra): 0.25 ug per 10 <sup>6</sup> cells in a 100 µl suspension
Isotype: IgG	Full Name: leucine rich repeat containing 2	
Immunogen Catalog Number: AG27830	Calculated MW: 371 aa, 43 kDa	

## Applications

Tested Applications: IHC, IF/ICC, FC (Intra), ELISA	Positive Controls: IHC : mouse skeletal muscle tissue, IF/ICC : U-251 cells, FC (Intra) : U-251 cells,
Species Specificity: human	
<b>Note-IHC: suggested antigen retrieval with TE buffer pH 9.0; (*) Alternatively, antigen retrieval may be performed with citrate buffer pH 6.0</b>	

## Background Information

Leucine Rich Repeat Containing 2 (LRRC2) was found to be localized to the mitochondria in human cells and transcriptionally regulated by the mitochondrial master regulator Pgc-1 $\alpha$ . It has been reported that Lrrc2 transcript abundance correlates with that of  $\beta$ -MHC, a canonical marker of cardiac hypertrophy in humans, and experimentally demonstrated an elevation in Lrrc2 transcript in vitro and in vivo rodent models of cardiac hypertrophy as well as in patients with dilated cardiomyopathy. (PMID: 28158196)

## Storage

Storage:  
Store at -20°C. Stable for one year after shipment.  
Storage Buffer:  
PBS with 0.02% sodium azide and 50% glycerol, pH7.3  
Aliquoting is unnecessary for -20°C storage

For technical support and original validation data for this product please contact:

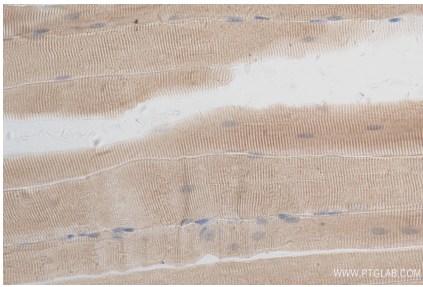
T: 4006900926

E: [Proteintech-CN@ptglab.com](mailto:Proteintech-CN@ptglab.com)

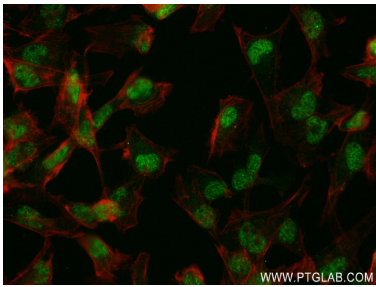
W: [ptgcn.com](http://ptgcn.com)

This product is exclusively available under Proteintech Group brand and is not available to purchase from any other manufacturer.

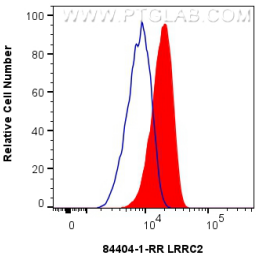
## Selected Validation Data



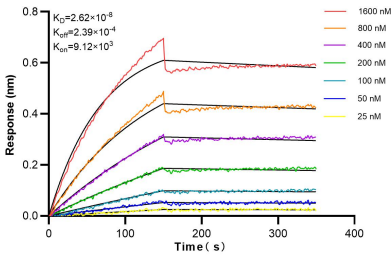
Immunohistochemical analysis of paraffin-embedded mouse skeletal muscle tissue slide using 84404-1-RR (LRRC2 antibody) at dilution of 1:200 (under 40x lens). Heat mediated antigen retrieval with Tris-EDTA buffer (pH 9.0).



Immunofluorescent analysis of (4% PFA) fixed U-251 cells using LRRC2 antibody (84404-1-RR, Clone: 241132G1) at dilution of 1:250 and CoraLite® 488-Conjugated Goat Anti-Rabbit IgG(H+L) (SA00013-2), CL594-Phalloidin (red).



1x10<sup>6</sup> U-251 cells were intracellularly stained with 0.25 ug LRRC2 Recombinant antibody (84404-1-RR, Clone:241132G1) and CoraLite® 488-Conjugated Goat Anti-Rabbit IgG(H+L) (SA00013-2) (red), or 0.25 ug Rabbit IgG Isotype Control RecAb (98136-1-RR, Clone: 240953C9) (blue). Cells were fixed and permeabilized with Transcription Factor Staining Buffer Kit (PF00011).



Biolayer interferometry (BLI) kinetic assays of 84404-1-RR against Human LRRC2 were performed. The affinity constant is 26.2 nM.