

For Research Use Only

Serum amyloid P component Recombinant antibody, PBS Only (Capture)

Catalog Number: 84402-2-PBS



Basic Information

Catalog Number:

84402-2-PBS

Size:

1 mg/ml

Source:

Rabbit

Isotype:

IgG

GenBank Accession Number:

BC007058

GeneID (NCBI):

325

UNIPROT ID:

P02743

Full Name:

amyloid P component, serum

Calculated MW:

223 aa, 25 kDa

Purification Method:

Protein A purification

CloneNo.:

241403B5

Applications

Tested Applications:

Sandwich ELISA, Indirect ELISA, Sample test

Species Specificity:

human

Background Information

Storage

Storage:

Store at -80°C.

The product is shipped with ice packs. Upon receipt, store it immediately at -80°C

Storage Buffer:

PBS Only

For technical support and original validation data for this product please contact:

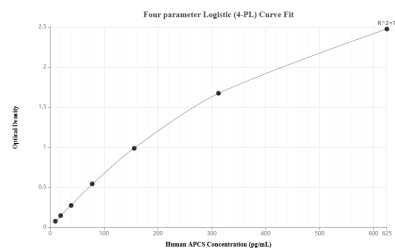
T: 4006900926

E: Proteintech-CN@ptglab.com

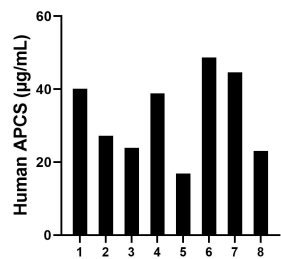
W: ptgcn.com

This product is exclusively available under Proteintech Group brand and is not available to purchase from any other manufacturer.

Selected Validation Data



Sandwich ELISA standard curve of MP01275-1, Human Serum amyloid P component Recombinant Matched Antibody Pair - PBS only. 84402-2-PBS was coated to a plate as the capture antibody and incubated with serial dilutions of standard Eg0528. 84402-1-PBS was HRP conjugated as the detection antibody. Range: 9.77-625 µg/mL



Serum of eight individual healthy human donors was measured. The human Serum amyloid P component concentration of detected samples was determined to be 32.91 µg/mL with a range of 16.86 - 48.68 µg/mL.