

For Research Use Only

PM20D1 Recombinant antibody

Catalog Number: 84397-2-RR



Basic Information

Catalog Number:

84397-2-RR

Size:

1000 µg/ml

Source:

Rabbit

Isotype:

IgG

Immunogen Catalog Number:

AG29154

GenBank Accession Number:

BC063477

GeneID (NCBI):

148811

UNIPROT ID:

Q6GTS8

Full Name:

peptidase M20 domain containing 1

Observed MW:

55-60 kDa

Purification Method:

Protein A purification

CloneNo.:

241557E1

Recommended Dilutions:

WB 1:5000-1:50000

Applications

Tested Applications:

WB, ELISA

Species Specificity:

human, mouse

Positive Controls:

WB : mouse kidney tissue, mouse pancreas tissue

Background Information

PM20D1 is a secreted enzyme that regulates the endogenous N-fatty acyl amino acid (NAAs) tissue and circulating levels by functioning as a bidirectional NAA synthase/hydrolase (PMID: 27374330).

Storage

Storage:

Store at -20°C. Stable for one year after shipment.

Storage Buffer:

PBS with 0.02% sodium azide and 50% glycerol pH 7.3.

Aliquoting is unnecessary for -20°C storage

For technical support and original validation data for this product please contact:

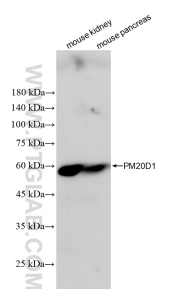
T: 4006900926

E: Proteintech-CN@ptglab.com

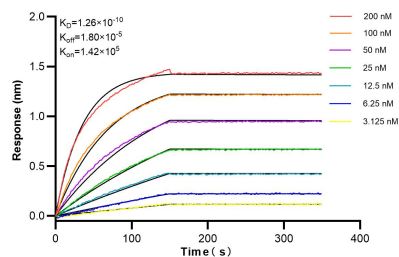
W: ptgcn.com

This product is exclusively available under Proteintech Group brand and is not available to purchase from any other manufacturer.

Selected Validation Data



Various lysates were subjected to SDS PAGE followed by western blot with 84397-2-RR (PM20D1 antibody) at dilution of 1:10000 incubated at room temperature for 1.5 hours.



Biolayer interferometry (BLI) kinetic assays of 84397-2-RR against Human PM20D1 were performed. The affinity constant is 0.126 nM.