

For Research Use Only

PM20D1 Recombinant antibody, PBS Only (Detector)

Catalog Number: 84397-2-PBS



Basic Information

Catalog Number:

84397-2-PBS

Size:

1 mg/ml

Source:

Rabbit

Isotype:

IgG

Immunogen Catalog Number:

AG29154

GenBank Accession Number:

BC063477

GeneID (NCBI):

148811

UNIPROT ID:

Q6GTS8

Full Name:

peptidase M20 domain containing 1

Observed MW:

55-60 kDa

Purification Method:

Protein A purification

CloneNo.:

241557E1

Applications

Tested Applications:

WB, Cytometric bead array, Indirect ELISA

Species Specificity:

human, mouse

Background Information

PM20D1 is a secreted enzyme that regulates the endogenous N-fatty acyl amino acid (NAAs) tissue and circulating levels by functioning as a bidirectional NAA synthase/hydrolase (PMID: 27374330).

Storage

Storage:

Store at -80°C.

The product is shipped with ice packs. Upon receipt, store it immediately at -80°C

Storage Buffer:

PBS Only

For technical support and original validation data for this product please contact:

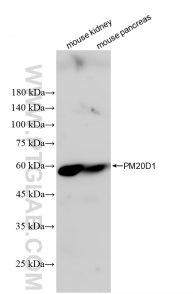
T: 4006900926

E: Proteintech-CN@ptglab.com

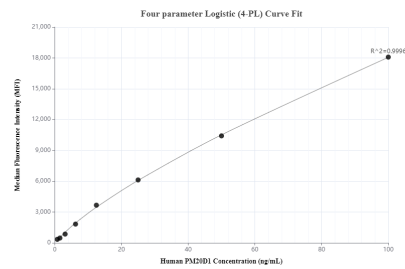
W: ptgcn.com

This product is exclusively available under Proteintech Group brand and is not available to purchase from any other manufacturer.

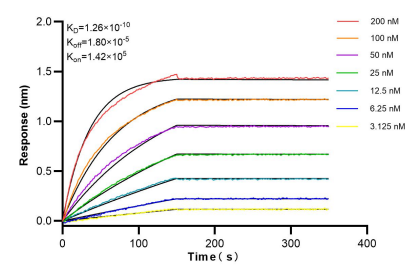
Selected Validation Data



Various lysates were subjected to SDS PAGE followed by western blot with 84397-2-RR (PM20D1 antibody) at dilution of 1:10000 incubated at room temperature for 1.5 hours. This data was developed using the same antibody clone with 84397-2-PBS in a different storage buffer formulation.



Cytometric bead array standard curve of MP01268-1, PM20D1 Recombinant Matched Antibody Pair, PBS Only. Capture antibody: 84397-1-PBS. Detection antibody: 84397-2-PBS. Standard: Ag29154. Range: 0.781-100 ng/mL.



Biolayer interferometry (BLI) kinetic assays of 84397-2-RR against Human PM20D1 were performed. The affinity constant is 0.126 nM.