

For Research Use Only

# FCAR Recombinant antibody, PBS Only (Capture)

Catalog Number: 84384-3-PBS



## Basic Information

Catalog Number:

84384-3-PBS

Size:

1 mg/ml

Source:

Rabbit

Isotype:

IgG

GenBank Accession Number:

BC027953

GeneID (NCBI):

2204

UNIPROT ID:

P24071

Full Name:

Fc fragment of IgA, receptor for

Calculated MW:

287 aa, 32 kDa

Purification Method:

Protein A purification

CloneNo.:

241426D1

## Applications

Tested Applications:

Cytometric bead array, Sandwich ELISA, Indirect ELISA, Sample test

Species Specificity:

human

## Background Information

### Storage

Storage:

Store at -80°C.

**The product is shipped with ice packs. Upon receipt, store it immediately at -80°C**

Storage Buffer:

PBS Only

For technical support and original validation data for this product please contact:

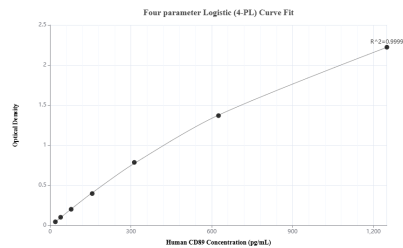
T: 4006900926

E: Proteintech-CN@ptglab.com

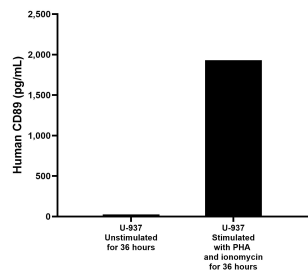
W: ptgcn.com

**This product is exclusively available under Proteintech Group brand and is not available to purchase from any other manufacturer.**

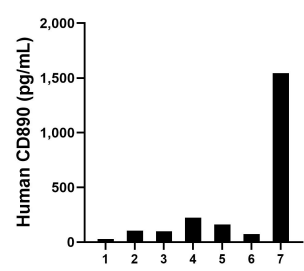
Selected Validation Data



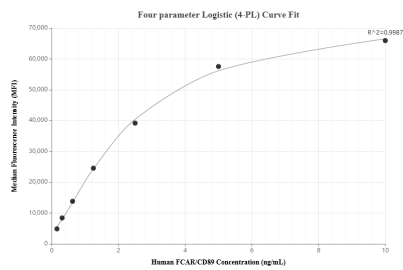
Sandwich ELISA standard curve of MP01257-2, Human CD89 Recombinant Matched Antibody Pair - PBS only. 84384-3-PBS was coated to a plate as the capture antibody and incubated with serial dilutions of standard RP02338. 84384-1-PBS was HRP conjugated as the detection antibody. Range: 19.5-1250 pg/mL



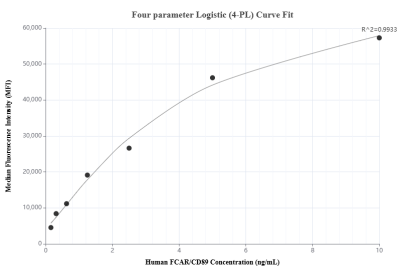
U-937 cells were cultured unstimulated or stimulated with 10  $\mu$ g/mL PHA and 1  $\mu$ g/mL ionomycin for 36 hours. The mean CD89 concentration was determined to be 25.5 pg/mL in unstimulated U-937 supernatant, 1,931.0 pg/mL in stimulated U-937 supernatant.



Serum of seven individual healthy human donors was measured. The human CD89 concentration of detected samples was determined to be 319.2 pg/mL with a range of 27.5 - 1,544.1 pg/mL



Cytometric bead array standard curve of MP01257-1, CD89 Recombinant Matched Antibody Pair, PBS Only. Capture antibody: 84384-3-PBS. Detection antibody: 84384-2-PBS. Standard: RP02338. Range: 0.156-10 ng/mL



Cytometric bead array standard curve of MP01257-2, CD89 Recombinant Matched Antibody Pair, PBS Only. Capture antibody: 84384-3-PBS. Detection antibody: 84384-1-PBS. Standard: RP02338. Range: 0.156-10 ng/mL