

For Research Use Only

CYP2R1 Recombinant antibody, PBS Only (Detector)

Catalog Number: 84378-5-PBS



Basic Information

Catalog Number:	84378-5-PBS	GenBank Accession Number:	BC104909	Purification Method:	Protein A purification
Size:	1 mg/ml	GeneID (NCBI):	120227	CloneNo.:	241072F11
Source:	Rabbit	UNIPROT ID:	Q6VVX0		
Isotype:	IgG	Full Name:	cytochrome P450, family 2, subfamily R, polypeptide 1		
Immunogen Catalog Number:	AG12873	Calculated MW:	501 aa, 57 kDa		
		Observed MW:	57 kDa		

Applications

Tested Applications:
WB, FC (Intra), Cytometric bead array, Indirect ELISA

Species Specificity:
human

Background Information

CYP2R1 is a member of the cytochrome P450 superfamily of enzymes which catalyze many reactions involved in drug metabolism and synthesis of cholesterol, steroids, and other lipids. CYP2R1 primarily functions as a 25-hydroxylase of vitamin D, responsible for converting vitamin D to 25-hydroxyvitamin D (25-OH-D), affecting the production of the active hormone 1,25(OH)₂D (PMID: 12867411). CYP2R1 enzyme is a key vitamin D 25-hydroxylase, mutations in CYP2R1 are associated with Rickets vitamin D-dependent 1B (PMID: 25942481, 15128933).

Storage

Storage:
Store at -80°C.
The product is shipped with ice packs. Upon receipt, store it immediately at -80°C

Storage Buffer:
PBS Only

For technical support and original validation data for this product please contact:

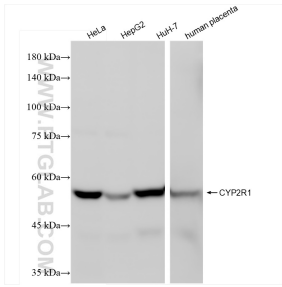
T: 4006900926

E: Proteintech-CN@ptglab.com

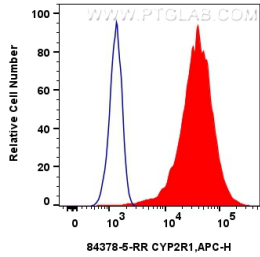
W: ptgcn.com

This product is exclusively available under Proteintech Group brand and is not available to purchase from any other manufacturer.

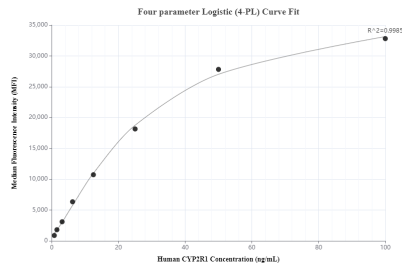
Selected Validation Data



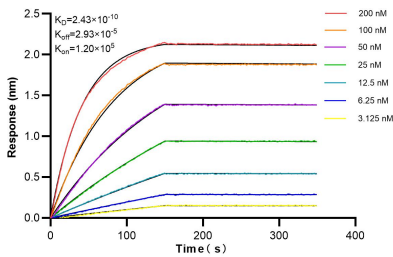
Various lysates were subjected to SDS PAGE followed by western blot with 84378-5-RR (CYP2R1 antibody) at dilution of 1:2000 incubated at room temperature for 1.5 hours. This data was developed using the same antibody clone with 84378-5-PBS in a different storage buffer formulation.



1x10⁶ HeLa cells were intracellularly stained with 0.25 ug CYP2R1 Recombinant antibody (84378-5-RR, Clone:241072F11) and PE-Conjugated Goat Anti-Rabbit IgG(H+L)(red), or 0.25 ug Rabbit IgG Isotype Control Recombinant Antibody (98136-1-RR, Clone: 240953C9) (blue). Cells were fixed with 4% PFA and permeabilized with Flow Cytometry Perm Buffer (PF00011-C). This data was developed using the same antibody clone with 84378-5-PBS in a different storage buffer



Cytometric bead array standard curve of MP01251-2, CYP2R1 Recombinant Matched Antibody Pair, PBS Only. Capture antibody: 84378-3-PBS. Detection antibody: 84378-5-PBS. Standard: Ag12873. Range: 0.781-100 ng/mL



Biolayer interferometry (BLI) kinetic assays of 84378-5-RR against Human CYP2R1 were performed. The affinity constant is 0.243 nM.