

For Research Use Only

# HAPLN1 Recombinant antibody, PBS Only (Capture/Detector)

Catalog Number:84374-2-PBS



## Basic Information

<b>Catalog Number:</b> 84374-2-PBS	<b>GenBank Accession Number:</b> BC057808	<b>Purification Method:</b> Protein A purification
<b>Concentration:</b> 1 mg/ml	<b>GeneID (NCBI):</b> 1404	<b>CloneNo.:</b> 241588E11
<b>Source:</b> Rabbit	<b>UNIPROT ID:</b> P10915	
<b>Isotype:</b> IgG	<b>Full Name:</b> hyaluronan and proteoglycan link protein 1	
<b>Immunogen Catalog Number:</b> AG25221	<b>Calculated MW:</b> 40 kDa	

## Applications

**Tested Applications:**  
Cytometric bead array, Sandwich ELISA, Indirect ELISA, Sample test

**Species Specificity:**  
human

## Background Information

### Storage

**Storage:**  
Store at -80°C.  
**The product is shipped with ice packs. Upon receipt, store it immediately at -80°C**

**Storage Buffer:**  
PBS only, pH7.3

For technical support and original validation data for this product please contact:

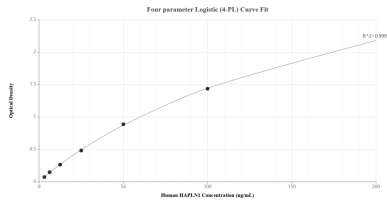
T: 4006900926

E: [Proteintech-CN@ptglab.com](mailto:Proteintech-CN@ptglab.com)

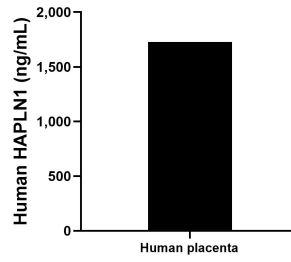
W: [ptgcn.com](http://ptgcn.com)

**This product is exclusively available under Proteintech Group brand and is not available to purchase from any other manufacturer.**

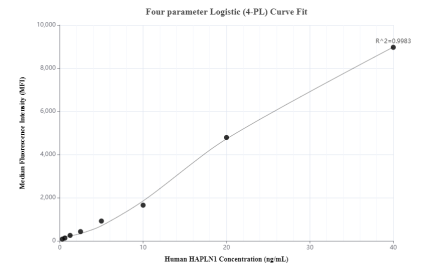
## Selected Validation Data



Sandwich ELISA standard curve of MP01245-3, Human HAPLN1 Recombinant Matched Antibody Pair - PBS only. 84374-5-PBS was coated to a plate as the capture antibody and incubated with serial dilutions of standard Ag25221. 84374-2-PBS was HRP conjugated as the detection antibody. Range: 3.13-200 ng/mL.



The mean HAPLN1 concentration was determined to be 1,727.92 ng/mL in human placenta tissue extract based on a 1.70 mg/mL extract load.



Cytometric bead array standard curve of MP01245-1, HAPLN1 Recombinant Matched Antibody Pair, PBS Only. Capture antibody: 84374-2-PBS. Detection antibody: 84374-1-PBS. Standard: Ag25221. Range: 0.313-40 ng/mL.