

For Research Use Only

Mouse CD28 Recombinant antibody, PBS Only (Detector)

Catalog Number: 84368-6-PBS



Basic Information

Catalog Number:

84368-6-PBS

Size:

1 mg/ml

Source:

Rabbit

Isotype:

IgG

GenBank Accession Number:

NM_007642.4

GeneID (NCBI):

12487

UNIPROT ID:

P31041

Full Name:

CD28 antigen

Calculated MW:

25 kDa

Purification Method:

Protein A purification

CloneNo.:

241706C11

Applications

Tested Applications:

Sandwich ELISA, Indirect ELISA, Sample test

Species Specificity:

mouse

Background Information

Storage

Storage:

Store at -80°C.

The product is shipped with ice packs. Upon receipt, store it immediately at -80°C

Storage Buffer:

PBS Only

For technical support and original validation data for this product please contact:

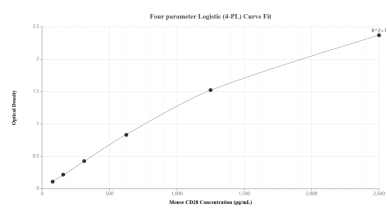
T: 4006900926

E: Proteintech-CN@ptglab.com

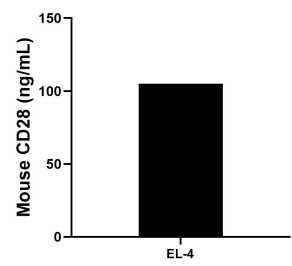
W: ptgcn.com

This product is exclusively available under Proteintech Group brand and is not available to purchase from any other manufacturer.

Selected Validation Data



Sandwich ELISA standard curve of MP01248-4, Mouse CD28 Recombinant Matched Antibody Pair - PBS only. 84368-7-PBS was coated to a plate as the capture antibody and incubated with serial dilutions of standard Eg1408. 84368-6-PBS was HRP conjugated as the detection antibody. Range: 78.1-2500 pg/mL.



The mean CD28 concentration was determined to be 105.0 ng/mL in EL-4 cell extract based on a 5.2 mg/mL extract load.