

For Research Use Only

# Mouse CD28 Recombinant antibody, PBS Only (Detector)

Catalog Number: 84368-4-PBS



## Basic Information

Catalog Number:	GenBank Accession Number:	Purification Method:
84368-4-PBS	NM_007642.4	Protein A purification
Size:	GeneID (NCBI):	CloneNo.:
1 mg/ml	12487	241707H6
Source:	UNIPROT ID:	
Rabbit	P31041	
Isotype:	Full Name:	
IgG	CD28 antigen	
	Calculated MW:	
	25 kDa	

## Applications

**Tested Applications:**  
IF/ICC, Cytometric bead array, Indirect ELISA

**Species Specificity:**  
mouse

## Background Information

CD28 (T-cell-specific surface glycoprotein CD28), also known as T44 and Tp44, is a 44 kD disulfide-linked homodimeric type I glycoprotein (PMID: 2162180). It is a member of the immunoglobulin superfamily and is expressed on most T lineage cells, NK cell subsets, and plasma cells (PMID: 2162180, 8386518). CD28 may affect in vivo immune responses by functioning both as a cell adhesion molecule linking B and T lymphocytes and as the surface component of a novel signal transduction pathway (PMID: 2162180, 3021470). CD28 binds both CD80 and CD86 with a highly conserved motif MYPPY in the CDR3-like loop (PMID: 15696168, 7964482). CD28 is considered a major co-stimulatory molecule, inducing T lymphocyte activation and IL-2 synthesis, and preventing cell death (PMID: 1348520).

## Storage

**Storage:**  
Store at -80°C.  
**The product is shipped with ice packs. Upon receipt, store it immediately at -80°C**

**Storage Buffer:**  
PBS Only

For technical support and original validation data for this product please contact:

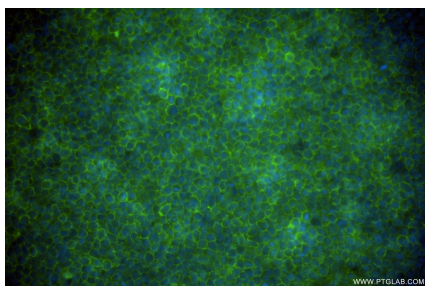
T: 4006900926

E: [Proteintech-CN@ptglab.com](mailto:Proteintech-CN@ptglab.com)

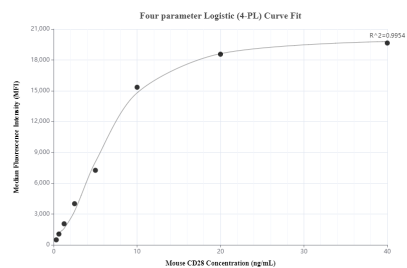
W: [ptgcn.com](http://ptgcn.com)

**This product is exclusively available under Proteintech Group brand and is not available to purchase from any other manufacturer.**

## Selected Validation Data



Immunofluorescent analysis of (4% PFA) fixed EL-4-B5 cells using CD28 antibody (84368-4-RR, Clone: 241707H6 ) at dilution of 1:200 and CoraLite®488-Conjugated Goat Anti-Rabbit IgG(H+L) (SA00013-2). This data was developed using the same antibody clone with 84368-4-PBS in a different storage buffer formulation.



Cytometric bead array standard curve of MP01248-3, MOUSE CD28 Recombinant Matched Antibody Pair, PBS Only. Capture antibody: 84368-5-PBS. Detection antibody: 84368-4-PBS. Standard: Eg1408. Range: 0.313-40 ng/mL.