

For Research Use Only

POLR3C Recombinant antibody, PBS Only

Catalog Number: 84367-6-PBS



Basic Information

Catalog Number:

84367-6-PBS

Concentration:

1 mg/ml

Source:

Rabbit

Isotype:

IgG

Immunogen Catalog Number:

AG27311

GenBank Accession Number:

BC002586

GeneID (NCBI):

10623

UNIPROT ID:

Q9BUI4

Full Name:

polymerase (RNA) III (DNA directed)

polypeptide C (62kD)

Calculated MW:

61 kDa

Observed MW:

58 kDa

Purification Method:

Protein A purification

CloneNo.:

241402A9

Applications

Tested Applications:

WB, IF/ICC, Indirect ELISA

Species Specificity:

human

Background Information

Mutations in the POLR3A, POLR3C, POLR3E, and POLR3F subunits are associated with susceptibility to varicella zoster virus-induced encephalitis and pneumonitis (PMID: 34395528).

Storage

Storage:

Store at -80°C.

The product is shipped with ice packs. Upon receipt, store it immediately at -80°C

Storage Buffer:

PBS only, pH7.3

For technical support and original validation data for this product please contact:

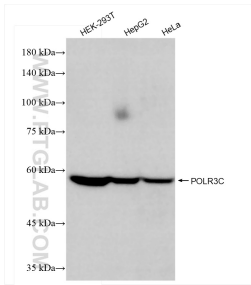
T: 4006900926

E: Proteintech-CN@ptglab.com

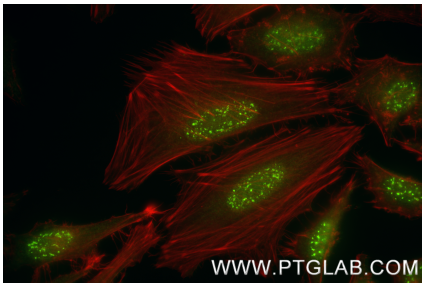
W: ptgcn.com

This product is exclusively available under Proteintech Group brand and is not available to purchase from any other manufacturer.

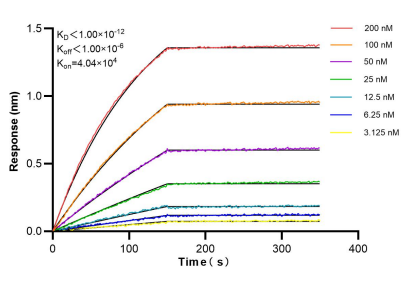
Selected Validation Data



Various lysates were subjected to SDS PAGE followed by western blot with 84367-6-RR (POLR3C antibody) at dilution of 1:8000 incubated at room temperature for 1.5 hours. This data was developed using the same antibody clone with 84367-6-PBS in a different storage buffer formulation.



Immunofluorescent analysis of (4% PFA) fixed HeLa cells using POLR3C antibody (84367-6-RR, Clone: 241402A9) at dilution of 1:2000 and CoraLite® 488-Conjugated Goat Anti-Rabbit IgG(H+L) (SA00013-2), CL594-Phalloidin (red). This data was developed using the same antibody clone with 84367-6-PBS in a different storage buffer formulation.



Biolayer interferometry (BLI) kinetic assays of 84367-6-RR against Human POLR3C were performed. The affinity constant is below 1 pM.