

For Research Use Only

# POLR3C Recombinant antibody, PBS Only (Capture/Detector)

Catalog Number: 84367-4-PBS



## Basic Information

Catalog Number:

84367-4-PBS

Size:

1 mg/ml

Source:

Rabbit

Isotype:

IgG

Immunogen Catalog Number:

AG27311

GenBank Accession Number:

BC002586

GeneID (NCBI):

10623

UNIPROT ID:

Q9BUI4

Full Name:

polymerase (RNA) III (DNA directed)

polypeptide C (62kD)

Calculated MW:

61 kDa

Purification Method:

Protein A purification

CloneNo.:

241402E12

## Applications

Tested Applications:

Cytometric bead array, Sandwich ELISA, Indirect ELISA, Sample test

Species Specificity:

human

## Background Information

### Storage

Storage:

Store at -80°C.

The product is shipped with ice packs. Upon receipt, store it immediately at -80°C

Storage Buffer:

PBS Only

For technical support and original validation data for this product please contact:

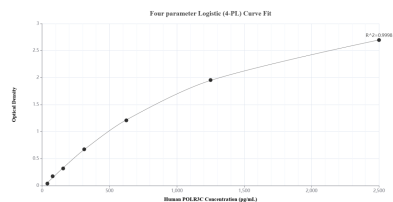
T: 4006900926

E: [Proteintech-CN@ptglab.com](mailto:Proteintech-CN@ptglab.com)

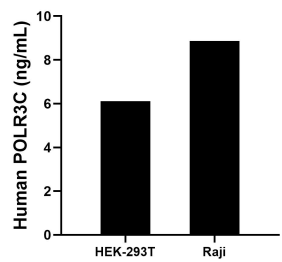
W: [ptgcn.com](http://ptgcn.com)

This product is exclusively available under Proteintech Group brand and is not available to purchase from any other manufacturer.

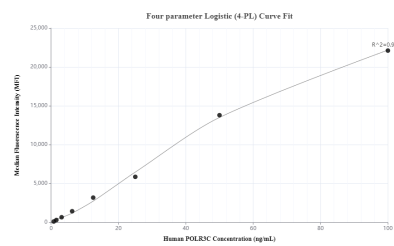
## Selected Validation Data



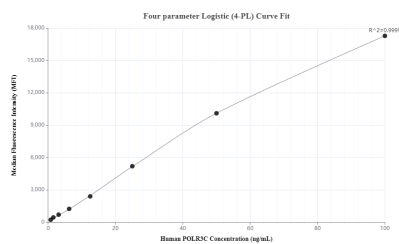
Sandwich ELISA standard curve of MP01234-4, Human POLR3C Recombinant Matched Antibody Pair - PBS only. 84367-5-PBS was coated to a plate as the capture antibody and incubated with serial dilutions of standard Ag27311. 84367-4-PBS was HRP conjugated as the detection antibody. Range: 39.1-2500 pg/mL.



The mean POLR3C concentration was determined to be 6.1 ng/mL in HEK-293T cell extract based on a 1.4 mg/mL extract load and 8.9 ng/mL in Raji cell extract based on a 1.2 mg/mL extract load.



Cytometric bead array standard curve of MP01234-1, POLR3C Recombinant Matched Antibody Pair, PBS Only. Capture antibody: 84367-4-PBS. Detection antibody: 84367-3-PBS. Standard: Ag27311. Range: 0.781-100 ng/mL.



Cytometric bead array standard curve of MP01234-2, POLR3C Recombinant Matched Antibody Pair, PBS Only. Capture antibody: 84367-2-PBS. Detection antibody: 84367-4-PBS. Standard: Ag27311. Range: 0.781-100 ng/mL.