

For Research Use Only

# EPN2 Recombinant antibody, PBS Only

Catalog Number: 84366-5-PBS



## Basic Information

Catalog Number:

84366-5-PBS

Size:

1 mg/ml

Source:

Rabbit

Isotype:

IgG

Immunogen Catalog Number:

AG35194

GenBank Accession Number:

BC093972

GeneID (NCBI):

22905

UNIPROT ID:

O95208

Full Name:

epsin 2

Calculated MW:

584 aa, 62 kDa

Observed MW:

62 kDa

Purification Method:

Protein A purification

CloneNo.:

241634F12

## Applications

Tested Applications:

WB, IHC, Indirect ELISA

Species Specificity:

human, mouse

## Background Information

EPN2 (EPS 15 interacting protein 2) is a protein that interacts with clathrin and adaptor-related protein complex 2, alpha 1 subunit. EPN2 is found in a brain-derived clathrin-coated vesicle fraction and localizes to the peri-Golgi region and the cell periphery.

## Storage

Storage:

Store at -80°C.

The product is shipped with ice packs. Upon receipt, store it immediately at -80°C

Storage Buffer:

PBS Only

For technical support and original validation data for this product please contact:

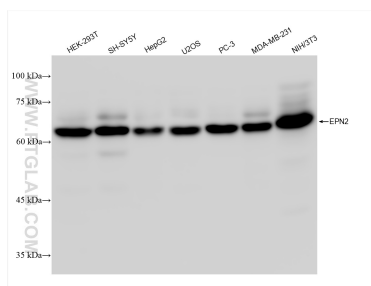
T: 4006900926

E: Proteintech-CN@ptglab.com

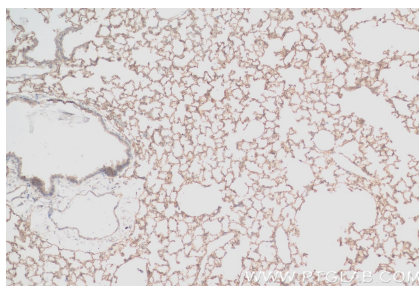
W: ptgcn.com

This product is exclusively available under Proteintech Group brand and is not available to purchase from any other manufacturer.

## Selected Validation Data



Various lysates were subjected to SDS PAGE followed by western blot with 84366-5-RR (EPN2 antibody) at dilution of 1:5000 incubated at room temperature for 1.5 hours. This data was developed using the same antibody clone with 84366-5-PBS in a different storage buffer formulation.



Immunohistochemical analysis of paraffin-embedded mouse lung tissue slide using 84366-5-RR (EPN2 antibody) at dilution of 1:200 (under 10x lens). Heat mediated antigen retrieval with Tris-EDTA buffer (pH 9.0). This data was developed using the same antibody clone with 84366-5-PBS in a different storage buffer formulation.