

For Research Use Only

EPN2 Recombinant antibody, PBS Only (Detector)

Catalog Number: 84366-1-PBS



Basic Information

Catalog Number:

84366-1-PBS

Concentration:

1 mg/ml

Source:

Rabbit

Isotype:

IgG

Immunogen Catalog Number:

AG35194

GenBank Accession Number:

BC093972

GeneID (NCBI):

22905

UNIPROT ID:

O95208

Full Name:

epsin 2

Calculated MW:

584 aa, 62 kDa

Purification Method:

Protein A purification

CloneNo.:

241634A3

Applications

Tested Applications:

Cytometric bead array, Sandwich ELISA, Indirect ELISA, Sample test

Species Specificity:

human

Background Information

Storage

Storage:

Store at -80°C.

The product is shipped with ice packs. Upon receipt, store it immediately at -80°C

Storage Buffer:

PBS only, pH7.3

For technical support and original validation data for this product please contact:

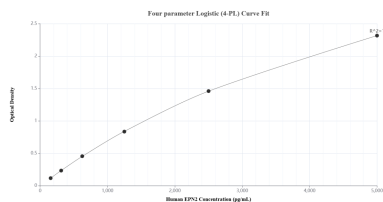
T: 4006900926

E: Proteintech-CN@ptglab.com

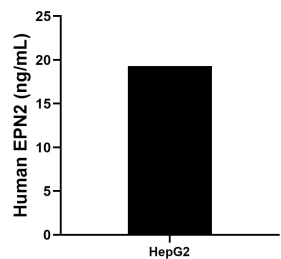
W: ptgcn.com

This product is exclusively available under Proteintech Group brand and is not available to purchase from any other manufacturer.

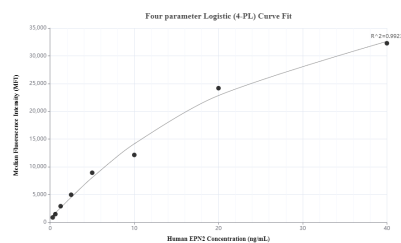
Selected Validation Data



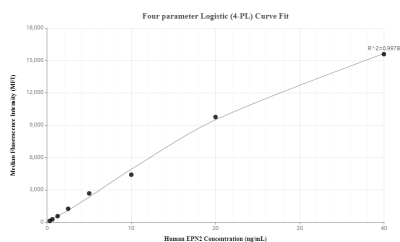
Sandwich ELISA standard curve of MP01232-1, Human EPN2 Recombinant Matched Antibody Pair - PBS only. 84366-4-PBS was coated to a plate as the capture antibody and incubated with serial dilutions of standard Ag35194. 84366-1-PBS was HRP conjugated as the detection antibody. Range: 156-5000 pg/mL



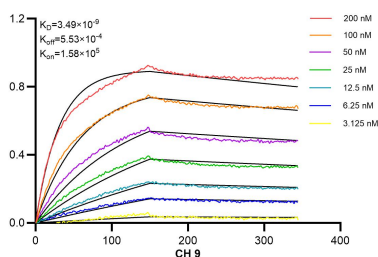
The mean EPN2 concentration was determined to be 19.3 ng/mL in HepG2 cell extract based on a 2.3 mg/mL extract load.



Cytometric bead array standard curve of MP01232-1, EPN2 Recombinant Matched Antibody Pair, PBS Only. Capture antibody: 84366-4-PBS. Detection antibody: 84366-1-PBS. Standard: Ag35194. Range: 0.313-40 ng/mL



Cytometric bead array standard curve of MP01232-3, EPN2 Recombinant Matched Antibody Pair, PBS Only. Capture antibody: 84366-3-PBS. Detection antibody: 84366-1-PBS. Standard: Ag35194. Range: 0.313-40 ng/mL



Biolayer interferometry (BLI) kinetic assays of 84366-1-RR against Human EPN2 were performed. The affinity constant is 3.49 nM.