

SIGNR1/CD209b Recombinant antibody

Catalog Number: 84365-5-RR

Basic Information

Catalog Number: 84365-5-RR	GenBank Accession Number: NM_026972.5	Purification Method: Protein A purification
Concentration: 1000 µg/ml	GeneID (NCBI): 69165	CloneNo.: 241726B1
Source: Rabbit	UNIPROT ID: Q8CJ91-1	Recommended Dilutions: WB 1:5000-1:50000 IHC 1:2000-1:8000 IF-P 1:250-1:1000
Isotype: IgG	Full Name: CD209b antigen	
Immunogen Catalog Number: EG1497	Calculated MW: 37 kDa Observed MW: 45-50 kDa	

Applications

Tested Applications: WB, IHC, IF-P, ELISA	Positive Controls:
Species Specificity: mouse	WB : mouse spleen tissue, IHC : mouse spleen tissue, IF-P : mouse spleen tissue,
Note-IHC: suggested antigen retrieval with TE buffer pH 9.0; (*) Alternatively, antigen retrieval may be performed with citrate buffer pH 6.0	

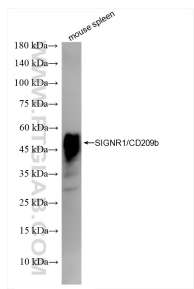
Background Information

SIGNR1 (CD209b) is a mouse homolog of the human DC-SIGN receptor (PMID: 11581173). SIGNR1 is a type II transmembrane protein with an extracellular domain consisting of a neck region made up of four repeats of 28 amino acids and a carbohydrate recognition domain (PMID: 15583012). It is expressed on marginal zone macrophages and peritoneal macrophages and is a key receptor for the recognition and efficient clearance of pathogens by the innate immune system.

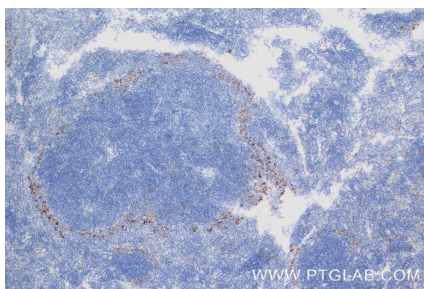
Storage

Storage:
Store at -20°C. Stable for one year after shipment.
Storage Buffer:
PBS with 0.02% sodium azide and 50% glycerol, pH7.3
Aliquoting is unnecessary for -20°C storage

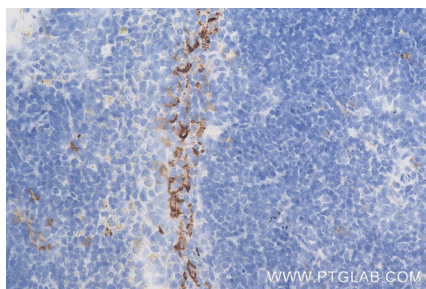
Selected Validation Data



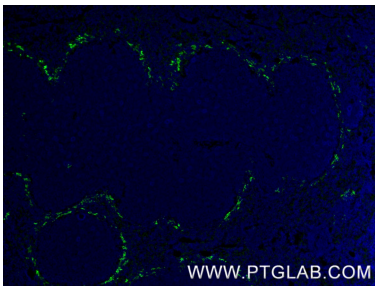
mouse spleen tissue were subjected to SDS PAGE followed by western blot with 84365-5-RR (SIGNR1/CD209b antibody) at dilution of 1:10000 incubated at room temperature for 1.5 hours.



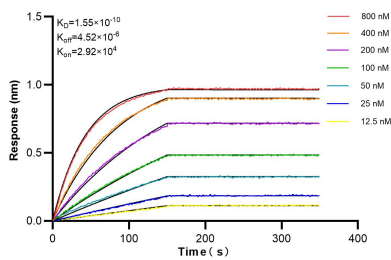
Immunohistochemical analysis of paraffin-embedded mouse spleen tissue slide using 84365-5-RR (SIGNR1/CD209b antibody) at dilution of 1:4000 (under 10x lens). Heat mediated antigen retrieval with Tris-EDTA buffer (pH 9.0).



Immunohistochemical analysis of paraffin-embedded mouse spleen tissue slide using 84365-5-RR (SIGNR1/CD209b antibody) at dilution of 1:4000 (under 40x lens). Heat mediated antigen retrieval with Tris-EDTA buffer (pH 9.0).



Immunofluorescent analysis of (4% PFA) fixed paraffin-embedded mouse spleen tissue using SIGNR1/CD209b antibody (84365-5-RR, Clone: 241726B1) at dilution of 1:500 and CoraLite®488-Conjugated Goat Anti-Rabbit IgG(H+L) (SA00013-2). Heat mediated antigen retrieval with Tris-EDTA buffer (pH 9.0).



Biolayer interferometry (BLI) kinetic assays of 84365-5-RR against Mouse SIGNR1/CD209b were performed. The affinity constant is 0.155 nM.