

For Research Use Only

# Mouse SIGNR1/CD209b Recombinant antibody, PBS Only

Catalog Number: 84365-5-PBS



## Basic Information

Catalog Number:

84365-5-PBS

Concentration:

1 mg/ml

Source:

Rabbit

Isotype:

IgG

Immunogen Catalog Number:

EG1497

GenBank Accession Number:

NM\_026972.5

GeneID (NCBI):

69165

UNIPROT ID:

Q8CJ91-1

Full Name:

CD209b antigen

Calculated MW:

37 kDa

Observed MW:

45-50 kDa

Purification Method:

Protein A purification

CloneNo.:

241726B1

## Applications

Tested Applications:

WB, IHC, IF-P, Indirect ELISA

Species Specificity:

mouse

## Background Information

SIGNR1 (CD209b) is a mouse homolog of the human DC-SIGN receptor (PMID: 11581173). SIGNR1 is a type II transmembrane protein with an extracellular domain consisting of a neck region made up of four repeats of 28 amino acids and a carbohydrate recognition domain (PMID: 15583012). It is expressed on marginal zone macrophages and peritoneal macrophages and is a key receptor for the recognition and efficient clearance of pathogens by the innate immune system.

## Storage

Storage:

Store at -80°C.

The product is shipped with ice packs. Upon receipt, store it immediately at -80°C

Storage Buffer:

PBS only, pH7.3

For technical support and original validation data for this product please contact:

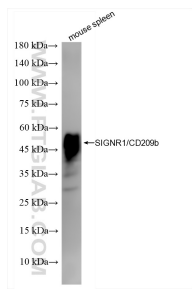
T: 4006900926

E: [Proteintech-CN@ptglab.com](mailto:Proteintech-CN@ptglab.com)

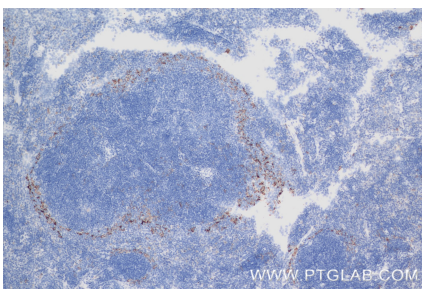
W: [ptgcn.com](http://ptgcn.com)

This product is exclusively available under Proteintech Group brand and is not available to purchase from any other manufacturer.

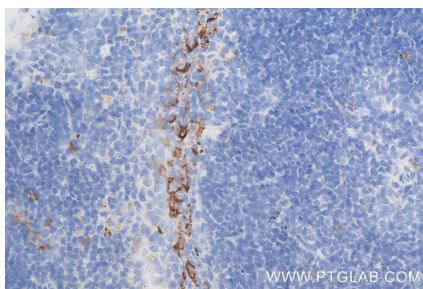
## Selected Validation Data



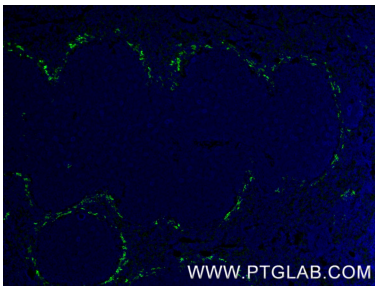
mouse spleen tissue were subjected to SDS PAGE followed by western blot with 84365-5-RR (SIGNR1/CD209b antibody) at dilution of 1:10000 incubated at room temperature for 1.5 hours. This data was developed using the same antibody clone with 84365-5-PBS in a different storage buffer formulation.



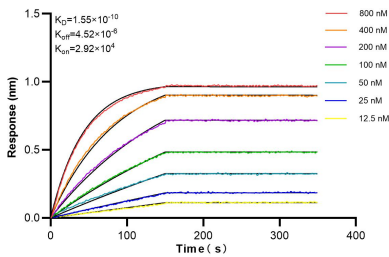
Immunohistochemical analysis of paraffin-embedded mouse spleen tissue slide using 84365-5-RR (SIGNR1/CD209b antibody) at dilution of 1:4000 (under 10x lens). Heat mediated antigen retrieval with Tris-EDTA buffer (pH 9.0). This data was developed using the same antibody clone with 84365-5-PBS in a different storage buffer formulation.



Immunohistochemical analysis of paraffin-embedded mouse spleen tissue slide using 84365-5-RR (SIGNR1/CD209b antibody) at dilution of 1:4000 (under 40x lens). Heat mediated antigen retrieval with Tris-EDTA buffer (pH 9.0). This data was developed using the same antibody clone with 84365-5-PBS in a different storage buffer formulation.



Immunofluorescent analysis of (4% PFA) fixed paraffin-embedded mouse spleen tissue using SIGNR1/CD209b antibody (84365-5-RR, Clone: 241726B1) at dilution of 1:500 and CoraLite® 488-Conjugated Goat Anti-Rabbit IgG(H+L) (SA00013-2). Heat mediated antigen retrieval with Tris-EDTA buffer (pH 9.0). This data was developed using the same antibody clone with 84365-5-PBS in a different storage buffer formulation.



Biolayer interferometry (BLI) kinetic assays of 84365-5-RR against Mouse SIGNR1/CD209b were performed. The affinity constant is 0.155 nM.