

For Research Use Only

IGFBP6 Recombinant antibody, PBS Only (Detector)

Catalog Number: 84364-1-PBS



Basic Information

Catalog Number:

84364-1-PBS

Size:

1 mg/ml

Source:

Rabbit

Isotype:

IgG

GenBank Accession Number:

BC011708

GeneID (NCBI):

3489

UNIPROT ID:

P24592

Full Name:

insulin-like growth factor binding protein 6

Calculated MW:

25 kDa

Purification Method:

Protein A purification

CloneNo.:

241724A11

Applications

Tested Applications:

Cytometric bead array, Sandwich ELISA, Indirect ELISA, Sample test

Species Specificity:

human

Background Information

Storage

Storage:

Store at -80°C.

The product is shipped with ice packs. Upon receipt, store it immediately at -80°C

Storage Buffer:

PBS Only

For technical support and original validation data for this product please contact:

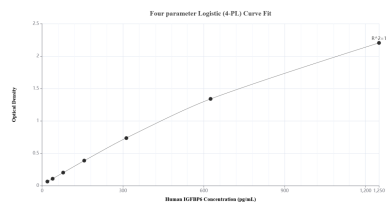
T: 4006900926

E: Proteintech-CN@ptglab.com

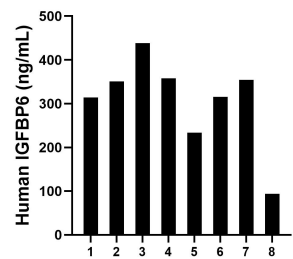
W: ptgcn.com

This product is exclusively available under Proteintech Group brand and is not available to purchase from any other manufacturer.

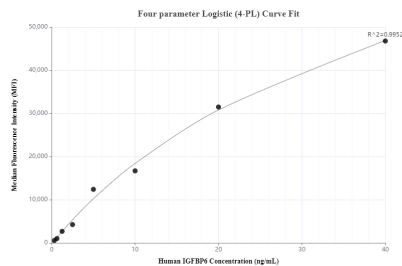
Selected Validation Data



Sandwich ELISA standard curve of MP01229-1, Human IGFBP6 Recombinant Matched Antibody Pair - PBS only. 84364-2-PBS was coated to a plate as the capture antibody and incubated with serial dilutions of standard Eg0087. 84364-1-PBS was HRP conjugated as the detection antibody. Range: 19.5-1250 pg/mL



Serum of eight individual healthy human donors was measured. The IGFBP6 concentration of detected samples was determined to be 307.3 ng/mL with a range of 94.1-438.5 ng/mL



Cytometric bead array standard curve of MP01229-1, IGFBP6 Recombinant Matched Antibody Pair, PBS Only. Capture antibody: 84364-2-PBS. Detection antibody: 84364-1-PBS. Standard: Eg0087. Range: 0.313-40 ng/mL