

For Research Use Only

Kindlin 2 Recombinant antibody, PBS Only (Capture)

Catalog Number: 84362-2-PBS



Basic Information

Catalog Number:

84362-2-PBS

Concentration:

1 mg/ml

Source:

Rabbit

Isotype:

IgG

Immunogen Catalog Number:

AG33840

GenBank Accession Number:

BC017327

GeneID (NCBI):

10979

UNIPROT ID:

Q96AC1

Full Name:

fermitin family homolog 2
(Drosophila)

Calculated MW:

680 aa, 78 kDa

Purification Method:

Protein A purification

CloneNo.:

241665B4

Applications

Tested Applications:

Cytometric bead array, Sandwich ELISA, Indirect ELISA,
Sample test

Species Specificity:

human

Background Information

Storage

Storage:

Store at -80°C.

The product is shipped with ice packs. Upon receipt, store it immediately at -80°C

Storage Buffer:

PBS only, pH7.3

For technical support and original validation data for this product please contact:

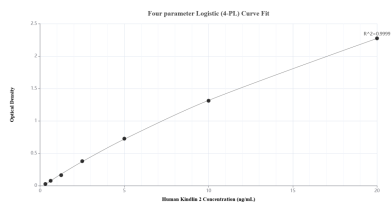
T: 4006900926

E: Proteintech-CN@ptglab.com

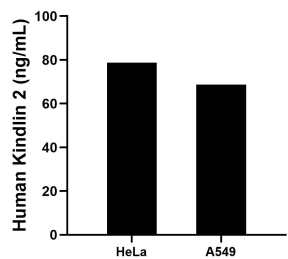
W: ptgcn.com

This product is exclusively available under Proteintech Group brand and is not available to purchase from any other manufacturer.

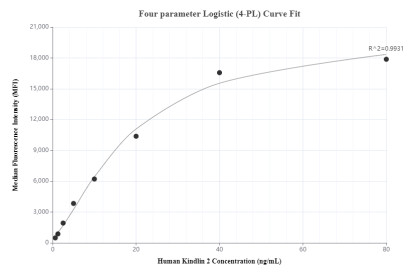
Selected Validation Data



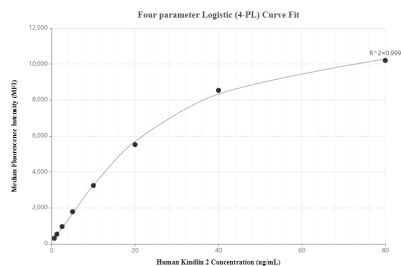
Sandwich ELISA standard curve of MP01239-1, Human Kindlin 2 Recombinant Matched Antibody Pair - PBS only. 84362-2-PBS was coated to a plate as the capture antibody and incubated with serial dilutions of standard Ag33840. 84362-1-PBS was HRP conjugated as the detection antibody. Range: 0.313-20 ng/mL.



The mean Kindlin 2 concentration was determined to be 78.81 ng/mL in HeLa cell extract based on a 1.50 mg/mL extract load and 68.63 ng/mL in A549 cell extract based on a 2.50 mg/mL extract load.



Cytometric bead array standard curve of MP01239-1, Kindlin 2 Recombinant Matched Antibody Pair, PBS Only. Capture antibody: 84362-2-PBS. Detection antibody: 84362-1-PBS. Standard: Ag33840. Range: 0.625-80 ng/mL.



Cytometric bead array standard curve of MP01239-2, Kindlin 2 Recombinant Matched Antibody Pair, PBS Only. Capture antibody: 84362-2-PBS. Detection antibody: 84362-3-PBS. Standard: Ag33840. Range: 0.625-80 ng/mL.