

For Research Use Only

# Mouse CD2 Recombinant antibody, PBS Only (Capture)

Catalog Number: 84360-5-PBS



## Basic Information

Catalog Number:

84360-5-PBS

Size:

1 mg/ml

Source:

Rabbit

Isotype:

IgG

GenBank Accession Number:

NM\_013486.2

GeneID (NCBI):

12481

UNIPROT ID:

P08920

Full Name:

CD2 antigen

Calculated MW:

38 kDa

Purification Method:

Protein A purification

CloneNo.:

241548E11

## Applications

Tested Applications:

Cytometric bead array, Sandwich ELISA, Indirect ELISA,  
Sample test

Species Specificity:

mouse

## Background Information

### Storage

Storage:

Store at -80°C.

**The product is shipped with ice packs. Upon receipt, store it immediately at -80°C**

Storage Buffer:

PBS Only

For technical support and original validation data for this product please contact:

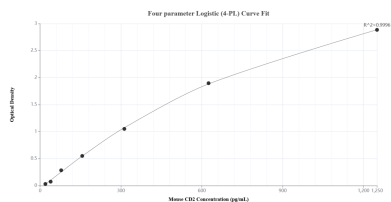
T: 4006900926

E: Proteintech-CN@ptglab.com

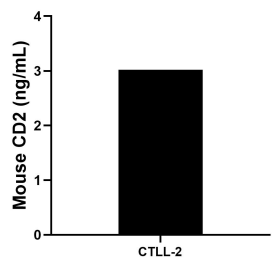
W: ptgcn.com

**This product is exclusively available under Proteintech Group brand and is not available to purchase from any other manufacturer.**

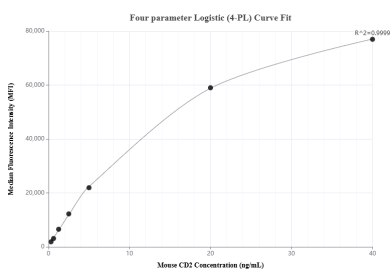
## Selected Validation Data



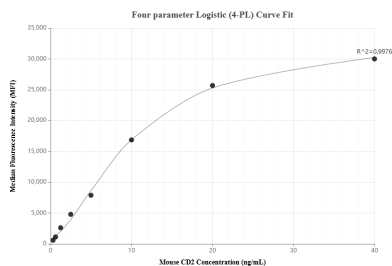
Sandwich ELISA standard curve of MP01249-1, Mouse CD2 Recombinant Matched Antibody Pair - PBS only. 84360-5-PBS was coated to a plate as the capture antibody and incubated with serial dilutions of standard Eg1403. 84360-4-PBS was HRP conjugated as the detection antibody. Range: 19.5-1250 pg/mL.



The mean CD2 concentration was determined to be 3.0 ng/mL in CTLL-2 cell extract based on a 0.9 mg/mL extract load.



Cytometric bead array standard curve of MP01249-1, MOUSE CD2 Recombinant Matched Antibody Pair, PBS Only. Capture antibody: 84360-5-PBS. Detection antibody: 84360-4-PBS. Standard: Eg1403. Range: 0.313-40 ng/mL.



Cytometric bead array standard curve of MP01249-3, MOUSE CD2 Recombinant Matched Antibody Pair, PBS Only. Capture antibody: 84360-5-PBS. Detection antibody: 84360-3-PBS. Standard: Eg1403. Range: 0.313-40 ng/mL.