

For Research Use Only

Mouse CD2 Recombinant antibody, PBS Only (Detector)

Catalog Number: 84360-4-PBS



Basic Information

Catalog Number:

84360-4-PBS

Size:

1 mg/ml

Source:

Rabbit

Isotype:

IgG

GenBank Accession Number:

NM_013486.2

GeneID (NCBI):

12481

UNIPROT ID:

P08920

Full Name:

CD2 antigen

Calculated MW:

38 kDa

Observed MW:

60 kDa

Purification Method:

Protein A purification

CloneNo.:

241548D7

Applications

Tested Applications:

WB, IHC, Cytometric bead array, Sandwich ELISA, Indirect ELISA, Sample test

Species Specificity:

mouse

Background Information

CD2 is a cell surface glycoprotein present on a majority of thymocytes, all mature T cells and subset of NK cells but not on B lymphocytes. It is a pan T-cell marker. CD2 interacts with lymphocyte function-associated antigen (LFA-3/CD58) and CD48/BCM1 to mediate adhesion between T-cells and other cell types. CD2 is implicated in the triggering of T-cells, the cytoplasmic domain is implicated in the signaling function.

Storage

Storage:

Store at -80°C.

The product is shipped with ice packs. Upon receipt, store it immediately at -80°C

Storage Buffer:

PBS Only

For technical support and original validation data for this product please contact:

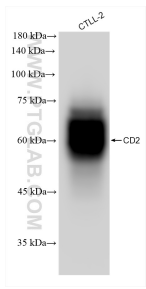
T: 4006900926

E: Proteintech-CN@ptglab.com

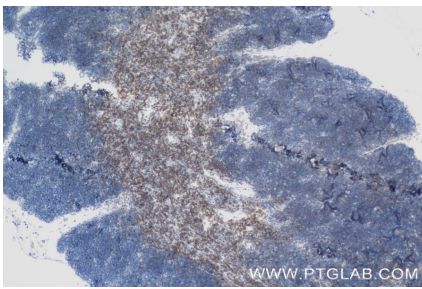
W: ptgcn.com

This product is exclusively available under Proteintech Group brand and is not available to purchase from any other manufacturer.

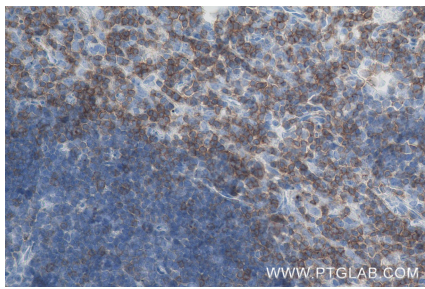
Selected Validation Data



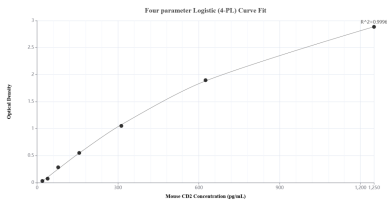
CTLL-2 cells were subjected to SDS PAGE followed by western blot with 84360-4-RR (CD2 antibody) at dilution of 1:1000 incubated at room temperature for 1.5 hours. This data was developed using the same antibody clone with 84360-4-PBS in a different storage buffer formulation.



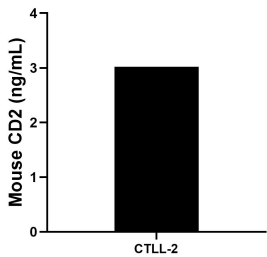
Immunohistochemical analysis of paraffin-embedded mouse thymus tissue slide using 84360-4-RR (CD2 antibody) at dilution of 1:1000 (under 10x lens). Heat mediated antigen retrieval with Tris-EDTA buffer (pH 9.0). This data was developed using the same antibody clone with 84360-4-PBS in a different storage buffer formulation.



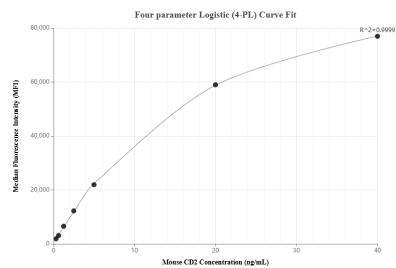
Immunohistochemical analysis of paraffin-embedded mouse thymus tissue slide using 84360-4-RR (CD2 antibody) at dilution of 1:1000 (under 40x lens). Heat mediated antigen retrieval with Tris-EDTA buffer (pH 9.0). This data was developed using the same antibody clone with 84360-4-PBS in a different storage buffer formulation.



Sandwich ELISA standard curve of MP01249-1, Mouse CD2 Recombinant Matched Antibody Pair - PBS only. 84360-5-PBS was coated to a plate as the capture antibody and incubated with serial dilutions of standard Eg1403. 84360-4-PBS was HRP conjugated as the detection antibody. Range: 19.5-1250 pg/mL



The mean CD2 concentration was determined to be 3.0 ng/mL in CTLL-2 cell extract based on a 0.9 mg/mL extract load.



Cytometric bead array standard curve of MP01249-1, MOUSE CD2 Recombinant Matched Antibody Pair, PBS Only. Capture antibody: 84360-5-PBS. Detection antibody: 84360-4-PBS. Standard: Eg1403. Range: 0.313-40 ng/mL