

For Research Use Only

# INSIG1 Recombinant antibody

Catalog Number: 84352-1-RR



## Basic Information

Catalog Number:

84352-1-RR

Size:

1000 µg/ml

Source:

Rabbit

Isotype:

IgG

GenBank Accession Number:

NM\_005542

GeneID (NCBI):

3638

UNIPROT ID:

O15503

Full Name:

insulin induced gene 1

Calculated MW:

30 kDa

Observed MW:

35 kDa

Purification Method:

Protein A purification

CloneNo.:

241353C7

Recommended Dilutions:

WB 1:5000-1:50000

## Applications

Tested Applications:

WB, ELISA

Species Specificity:

human, mouse, rat

Positive Controls:

WB : mouse liver tissue, rat liver tissue

## Background Information

### Storage

Storage:

Store at -20°C. Stable for one year after shipment.

Storage Buffer:

PBS with 0.02% sodium azide and 50% glycerol pH 7.3.

Aliquoting is unnecessary for -20°C storage

For technical support and original validation data for this product please contact:

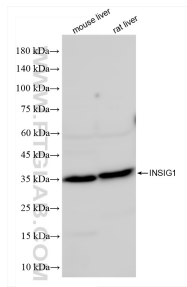
T: 4006900926

E: [Proteintech-CN@ptglab.com](mailto:Proteintech-CN@ptglab.com)

W: [ptgcn.com](http://ptgcn.com)

This product is exclusively available under Proteintech Group brand and is not available to purchase from any other manufacturer.

## Selected Validation Data



Various lysates were subjected to SDS PAGE followed by western blot with 84352-1-RR (INSIG1 antibody) at dilution of 1:10000 incubated at room temperature for 1.5 hours.