

For Research Use Only

EXOSC6 Recombinant monoclonal antibody

Catalog Number: 84346-4-RR

Featured Product



Basic Information

Catalog Number:

84346-4-RR

Source:

Rabbit

Isotype:

IgG

Immunogen Catalog Number:

AG33513

GenBank Accession Number:

NM_058219

GeneID (NCBI):

118460

UNIPROT ID:

Q5RKV6

Full Name:

exosome component 6

Calculated MW:

28kd

Observed MW:

28-32 kDa

Purification Method:

Protein A purification

CloneNo.:

241535C3

Recommended Dilutions:

WB: 1:2000-1:10000

IF/ICC: 1:200-1:800

FC (Intra): 0.25 ug per 10⁶ cells in a 100 µl suspension

Applications

Tested Applications:

WB, IF/ICC, FC (Intra), ELISA

Species Specificity:

human

Positive Controls:

WB : HeLa cells, HEK-293 cells, HepG2 cells, Jurkat cells, K-562 cells, MCF-7 cells, HaCat cells

IF/ICC : HeLa cells,

FC (Intra) : HeLa cells,

Background Information

EXOSC6 (exosome component 6), also known as p11 or MTR3. The calculated molecular weight of EXOSC6 is 28 kDa. And it has low tissue specificity. The gene product constitutes one of the subunits of the multisubunit particle called exosome, which mediates mRNA degradation. It is also a component of the RNA exosome complex (PMID: 29906447). The composition of human exosome is similar to its yeast counterpart. EXOSC6 is homologous to the yeast Mtr3 protein. Its exact function is not known, however, it has been shown using a cell-free RNA decay system that the exosome is required for rapid degradation of unstable mRNAs containing AU-rich elements (AREs), but not for poly(A) shortening. The exosome does not recognize ARE-containing mRNAs on its own, but requires ARE-binding proteins that could interact with the exosome and recruit it to unstable mRNAs, thereby promoting their rapid degradation.

Storage

Storage:

Store at -20°C. Stable for one year after shipment.

Storage Buffer:

PBS with 0.02% sodium azide and 50% glycerol, pH7.3

Aliquoting is unnecessary for -20°C storage

For technical support and original validation data for this product please contact:

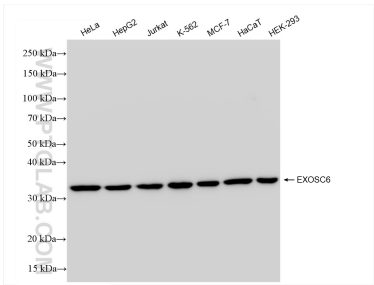
T: 4006900926

E: Proteintech-CN@ptglab.com

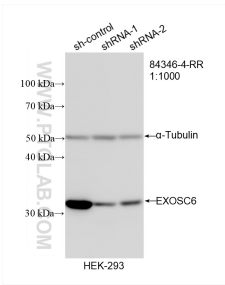
W: ptgcn.com

This product is exclusively available under Proteintech Group brand and is not available to purchase from any other manufacturer.

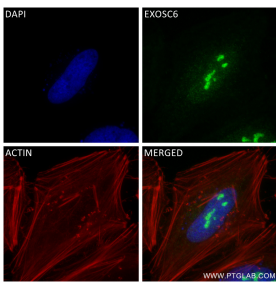
Selected Validation Data



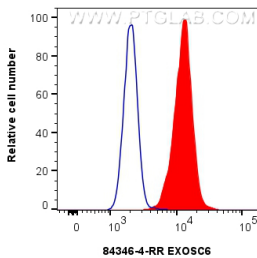
Various lysates were subjected to SDS PAGE followed by western blot with 84346-4-RR (EXOSC6 antibody) at dilution of 1:5000 incubated at room temperature for 1.5 hours.



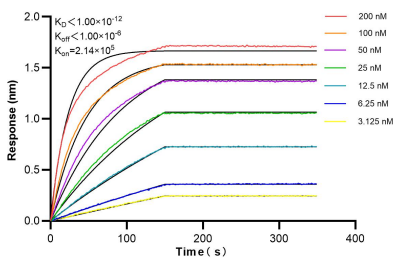
WB result of EXOSC6 antibody (84346-4-RR; 1:1000; incubated at room temperature for 1.5 hours) with sh-Control and sh-EXOSC6 transfected HEK-293 cells.



Immunofluorescent analysis of (4% PFA) fixed HeLa cells using EXOSC6 antibody (84346-4-RR, Clone: 241535C3) at dilution of 1:400 and CoraLite®488-Conjugated Goat Anti-Rabbit IgG(H+L) (SA00013-2), CL594-Phalloidin (red).



1x10⁶ HeLa cells were intracellularly stained with 0.25 ug EXOSC6 Recombinant antibody (84346-4-RR, Clone:241535C3) and CoraLite®488-Conjugated Goat Anti-Rabbit IgG(H+L) (SA00013-2) (red), or 0.25 ug Rabbit IgG Isotype Control RecAb (98136-1-RR, Clone: 240953C9) (blue). Cells were fixed with 4% PFA and permeabilized with Flow Cytometry Perm Buffer.



Biolayer interferometry (BLI) kinetic assays of 84346-4-RR against Human EXOSC6 were performed. The affinity constant is below 1 pM.