

For Research Use Only

PAX6 Recombinant antibody, PBS Only (Capture/Detector)

Catalog Number: 84345-4-PBS



Basic Information

Catalog Number:

84345-4-PBS

Concentration:

1 mg/ml

Source:

Rabbit

Isotype:

IgG

Immunogen Catalog Number:

AG2984

GenBank Accession Number:

BC011953

GeneID (NCBI):

5080

UNIPROT ID:

P26367

Full Name:

paired box 6

Calculated MW:

47 kDa

Purification Method:

Protein A purification

CloneNo.:

241521H7

Applications

Tested Applications:

Cytometric bead array, Sandwich ELISA, Indirect ELISA,
Sample test

Species Specificity:

human

Background Information

Storage

Storage:

Store at -80°C.

The product is shipped with ice packs. Upon receipt, store it immediately at -80°C

Storage Buffer:

PBS Only

For technical support and original validation data for this product please contact:

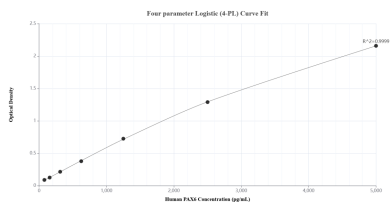
T: 4006900926

E: Proteintech-CN@ptglab.com

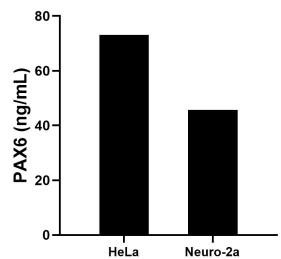
W: ptgcn.com

This product is exclusively available under Proteintech Group brand and is not available to purchase from any other manufacturer.

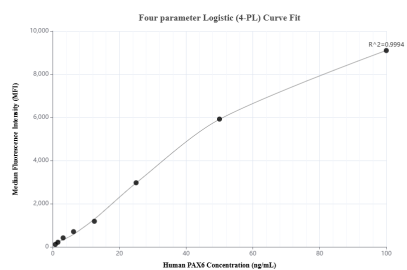
Selected Validation Data



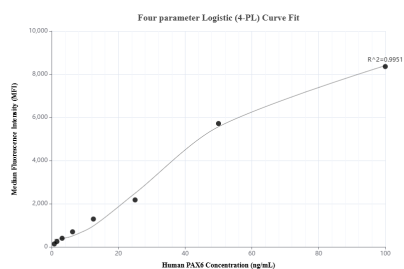
Sandwich ELISA standard curve of MP01219-4, Human PAX6 Recombinant Matched Antibody Pair - PBS only. 84345-2-PBS was coated to a plate as the capture antibody and incubated with serial dilutions of standard Ag2984. 84345-4-PBS was HRP conjugated as the detection antibody. Range: 78.1-5000 pg/mL.



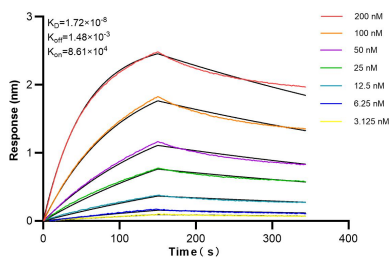
The mean PAX6 concentration was determined to be 73.1 ng/mL in HeLa cell extract based on a 2.8 mg/mL extract load and 45.8 ng/mL in Neuro-2a cell extract based on a 2.3 mg/mL extract load.



Cytometric bead array standard curve of MP01219-2, PAX6 Recombinant Matched Antibody Pair, PBS Only. Capture antibody: 84345-4-PBS. Detection antibody: 84345-1-PBS. Standard: Ag2984. Range: 0.781-100 ng/mL.



Cytometric bead array standard curve of MP01219-3, PAX6 Recombinant Matched Antibody Pair, PBS Only. Capture antibody: 84345-4-PBS. Detection antibody: 84345-3-PBS. Standard: Ag2984. Range: 0.781-100 ng/mL.



Biolayer interferometry (BLI) kinetic assays of 84345-4-RR against Human PAX6 were performed. The affinity constant is 1.72 nM.