

For Research Use Only

# PAX6 Recombinant antibody, PBS Only (Capture)

Catalog Number: 84345-2-PBS



## Basic Information

Catalog Number:	84345-2-PBS	GenBank Accession Number:	BC011953	Purification Method:	Protein A purification
Concentration:	1 mg/ml	GeneID (NCBI):	5080	CloneNo.:	241521C10
Source:	Rabbit	UNIPROT ID:	P26367		
Isotype:	IgG	Full Name:	paired box 6		
Immunogen Catalog Number:	AG2984	Calculated MW:	47 kDa		

## Applications

**Tested Applications:**  
Cytometric bead array, Sandwich ELISA, Indirect ELISA, Sample test

**Species Specificity:**  
human

## Background Information

### Storage

**Storage:**  
Store at -80°C.  
**The product is shipped with ice packs. Upon receipt, store it immediately at -80°C**

**Storage Buffer:**  
PBS Only

For technical support and original validation data for this product please contact:

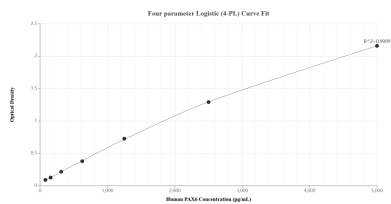
T: 4006900926

E: Proteintech-CN@ptglab.com

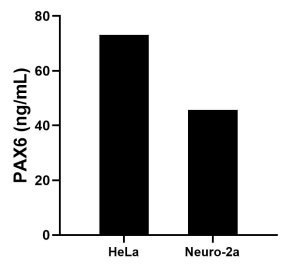
W: ptgcn.com

**This product is exclusively available under Proteintech Group brand and is not available to purchase from any other manufacturer.**

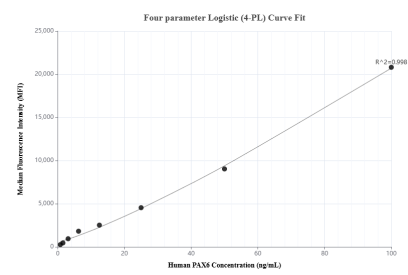
## Selected Validation Data



Sandwich ELISA standard curve of MP01219-4, Human PAX6 Recombinant Matched Antibody Pair - PBS only. 84345-2-PBS was coated to a plate as the capture antibody and incubated with serial dilutions of standard Ag2984. 84345-4-PBS was HRP conjugated as the detection antibody. Range: 78.1-5000 pg/mL.



The mean PAX6 concentration was determined to be 73.1 ng/mL in HeLa cell extract based on a 2.8 mg/mL extract load and 45.8 ng/mL in Neuro-2a cell extract based on a 2.3 mg/mL extract load.



Cytometric bead array standard curve of MP01219-1, PAX6 Recombinant Matched Antibody Pair, PBS Only. Capture antibody: 84345-2-PBS. Detection antibody: 84345-3-PBS. Standard: Ag2984. Range: 0.781-100 ng/mL.